

TOOL-LESS CONNECTORS

Easy, fast and safe
wiring

THE TRADITION OF INNOVATION SINCE 1945

ILME designs and manufactures complete solutions for industrial connections.

Headquartered in Milan and with subsidiaries in the key countries driving the progress of automation, ILME is an industry leader in the main world markets.

People are vital to success and growth at ILME, sharing a passion for innovation, utmost responsibility and participation.

The Company is committed to developing technology in the areas that mostly impact the future of the industries it serves: safe and high quality wiring, research on the most suitable materials, rapid delivery time and readily available services, while striving for energy saving and environmental protection.



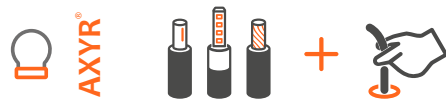
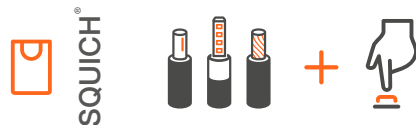
ILME TOOL-LESS CONNECTION TECHNOLOGY OVERVIEW

When it comes to the assembly, connection and mounting of connectors, an easy and fast termination technology benefits the operator and the overall process performance.

By minimizing the risk of errors and requiring less time to build each connection, production and maintenance costs decrease significantly allowing more complete connectors to be ready in less time.

Tool-less wiring is the standard operation that ILME offers wherever possible, **just insert the wire and with a click the connection is made.** No need of specific tools or skills. As simple as that!

FAST AND RELIABLE CONNECTIONS IN RECORD TIME!



KEY FEATURES



QUICK

Save time in the wiring process



EASY

No specific know-how and no wiring tools required



SAFE

Withstand the most demanding mechanical stresses and vibrations



COMPATIBLE

Suitable for prepared, unprepared and solid wires

The cornerstone of ILME R&D activity focusing on easy installation and safe wiring gets its pioneering example in the SQUICH® technology.

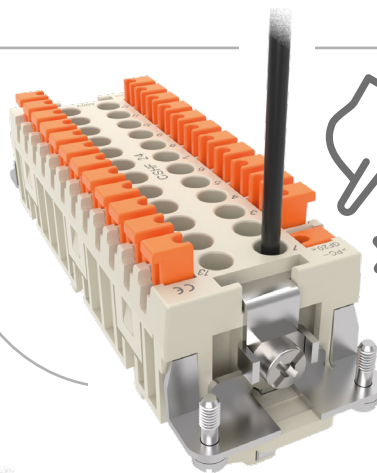
Based on well-known and proven spring technology, SQUICH® allows tool-free connection **at the push of a button**, while providing all the advantages of traditional springs, such as resistance to temperature changes, shock and vibration.

Compatible with prepared, unprepared and solid wires, any application benefits from a safe and reliable electrical connection.



Watch
our video

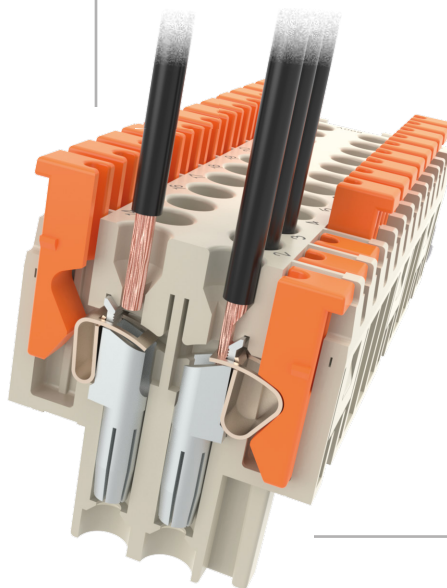
Insert the wire
into the contact hole



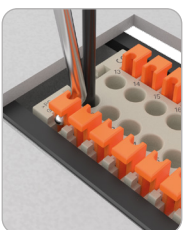
Just Push the
actuator button



The **spring clamp**
safely fixes the wire



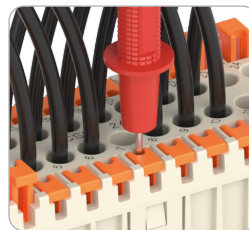
Re-opening



CSHES allows the release of the connection from a SQUICH® terminal without disassembling the connector from the bulkhead mounting housing.

Not suitable for CKSH and CX 05 SH, whose re-opening can be done with a flat blade screwdriver.

Probing slots



Easy to access probing slot
on buttons for measuring devices,
even with mounted connector.



Product range for 16 A connections

Cross sectional area of either prepared or unprepared wires: 0,14 – 2,5 mm² / AWG 26 – AWG 14

CSH

The original one

Rating
16 A 500 V 6 kV 3
16 A 400/690 V 6 kV 2

Variants

JSH S with stamped tin plated contacts
RSH with gold plated contacts for HNM
CSH T for thermocouple applications

CSH 06

CSH 10

CSH 16

CSH 24

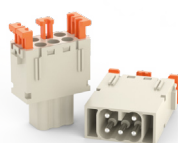
Poles	6 + ⊕	10 + ⊕	16 + ⊕	24 + ⊕
Size	44.27	57.27	77.27	104.27



CX 05 SH

MIXO Modular version

Poles 5
Size 1 module



Rating
16 A 400 V 6 kV 3
16 A 500 V 6 kV 2

CSAH

Slim size

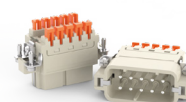
Rating
16 A 250 V 4 kV 3
16 A 400 V 4 kV 2

Max. 1,5 mm² / AWG 16
prepared stranded wires

CSAH 10

CSAH 16

Poles	10 + ⊕	16 + ⊕
Size	49.16	66.16



CMSH

High voltage

Rating
16 A 830 V 8 kV 3
16 A 1000 V 8 kV 2
16 A 720/1250 V 8 kV 2

Auxiliary contacts rating
16 A 500 V 6 kV 3

CMSH 03

CMSH 06

CMSH 10

Poles	3 + 2 + ⊕	6 + 2 + ⊕	10 + 2 + ⊕
Size	57.27	77.27	104.27



Product range for 10 A connections

Cross sectional area of unprepared wires: 0,14 – 2,5 mm² / AWG 26 – AWG 14

Cross sectional area of prepared wires: 0,14 – 1,5 mm² / AWG 26 – AWG 16

CDSH

The highest density

Rating
10 A 400 V 6 kV 3
10 A 400/690 V 6 kV 2

Coding System OPTIONAL



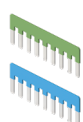
CR K03 for CDSH

Variants

RDSH with gold plated contacts for HNM

CDSH 06 NC insert featuring 3 contact pairs with **AutoShort NC** element on each pair of female connector

Accessories



Parallel bridges for CDSH for extra-low voltage applications

Rating
10 A 50 V 0,8 kV 3

CDSH 09

CDSH 18

CDSH 27

CDSH 42

Poles	9 + ⊕	18 + ⊕	27 + ⊕	42 + ⊕
Size	44.27	57.27	77.27	104.27



CKSH

Compact size 21.21

Rating
10 A 400 V 4 kV 3
10 A 690 V 4 kV 2

Coding System OPTIONAL



CR K03 for CKSH 03



CR K04R for CKSH 04
CR K04G for CKSH 04

CKSH 03

CKSH 04

Poles	3 + ⊕	4 + ⊕
Size	21.21	21.21



Green button for PE contact





AXYR®

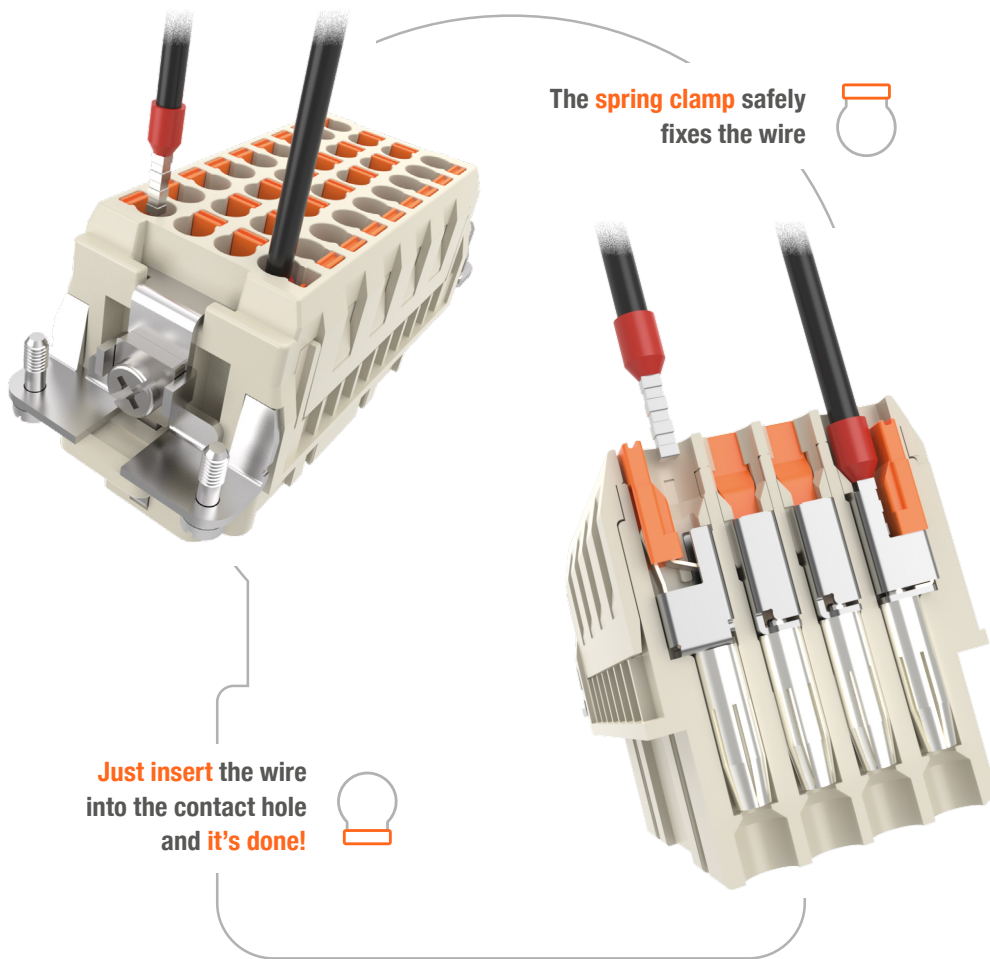
AXYR® is the new rapid connection technology developed by ILME to optimize work times and methods, enabling industries of all sectors to reach their automation targets more effectively.

An **extremely compact push-in spring termination** which equals crimp connectors in high density, therefore guaranteeing an equivalent electrical performance.

Wiring in axis is the formula that recaps the technology strongpoint as it enables **straightforward tool-less wiring**. Operations require one simple step: wire insertion.



Watch
our video



Just insert the wire
into the contact hole
and **it's done!**

Re-opening



Push down the
actuator button
by a flat-blade
screwdriver
(0,5 × 3 mm max.)
to remove the wire.

Accessories

Coding Systems
OPTIONAL



CR Q08E

Coding pins for **CQEY** and
CQY 08E for up to 6 unique
configurations.



CR CPC

Coding pins for **CPY 06**
for up to 6 unique
configurations.

Product range for 40 A and 35 A connections

Cross sectional area of prepared wires: 1,5 – 6 mm² / AWG 16 – AWG 10
Cross sectional area of unprepared wires: 1,5 – 6 mm² / AWG 16 – AWG 10

MIXO Modular versions

40 A inserts

	CX 02 4Y	CX 03 4Y	CX 04 XY
Poles	2	3	4
Size	1 module	1 module	1 module

i
Cross sectional area of prepared wires:
1,5 – 4 mm² /
AWG 16 – AWG 12



Rating 40 A 1000 V 8 kV 3 40 A 690 V 8 kV 3 40 A 830 V 8 kV 3

CPY 06

35 A inserts

Poles	6 + ⊕
Size	77.27

Coding System
OPTIONAL

CR CPC
coding pins



Rating
35 A 400 / 690 V 6 kV 3

Product range for 16 A connections

Cross sectional area of prepared wires: 0,25 – 2,5 mm² / AWG 24 – AWG 14
Cross sectional area of unprepared wires: 0,25 – 4,0 mm² / AWG 24 – AWG 12

CQEY

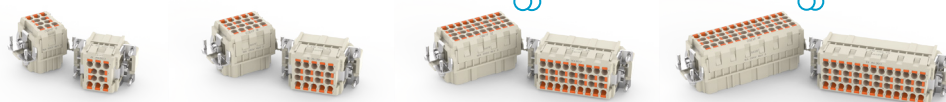
High contacts density

Rating
16 A 500 V 6 kV 3
16 A 830 V 8 kV 2



Coding System
OPTIONAL
CR Q08E coding pins

	CQEY 10	CQEY 18	CQEY 32	CQEY 46
Poles	10 + ⊕	18 + ⊕	32 + ⊕	46 + ⊕
Size	44.27	57.27	77.27	104.27



CQY 08E

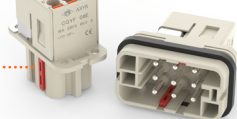
Compact size with integrated PE plate

Poles	8 + ⊕
Size	32.13



Green button
for PE contact

CR Q08E coding pin
(up to 4 pins)
OPTIONAL



Rating
16 A 500 V 6 kV 3
16 A 400 / 690 V 8 kV 2

CQY 05

Compact size 21.21

Poles	5 + ⊕
Size	21.21



Green button
for PE contact



Rating 16 A 230 / 400 V 4 kV 3

CX 06 CY and CX 08 CY

MIXO Modular versions

Poles	6
Size	1 module



Rating 16 A 500 V 6 kV 3

Poles	8
Size	1 module



Rating 16 A 400 V 6 kV 3

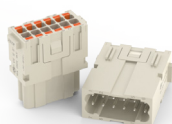
Product range for 10 A connections

Cross sectional area of prepared wires: 0,14 – 1,5 mm² / AWG 26 – AWG 16
Cross sectional area of unprepared wires: 0,14 – 2,5 mm² / AWG 26 – AWG 14

CX 12 DY

MIXO Modular version

Poles	12
Size	1 module



Rating 10 A 250 V 4 kV 3

CDY 07

Compact size 21.21

Poles	7 + ⊕
Size	21.21



Green button
for PE contact

Rating 10 A 250 V 4 kV 3
10 A 230 / 400 V 4 kV 2

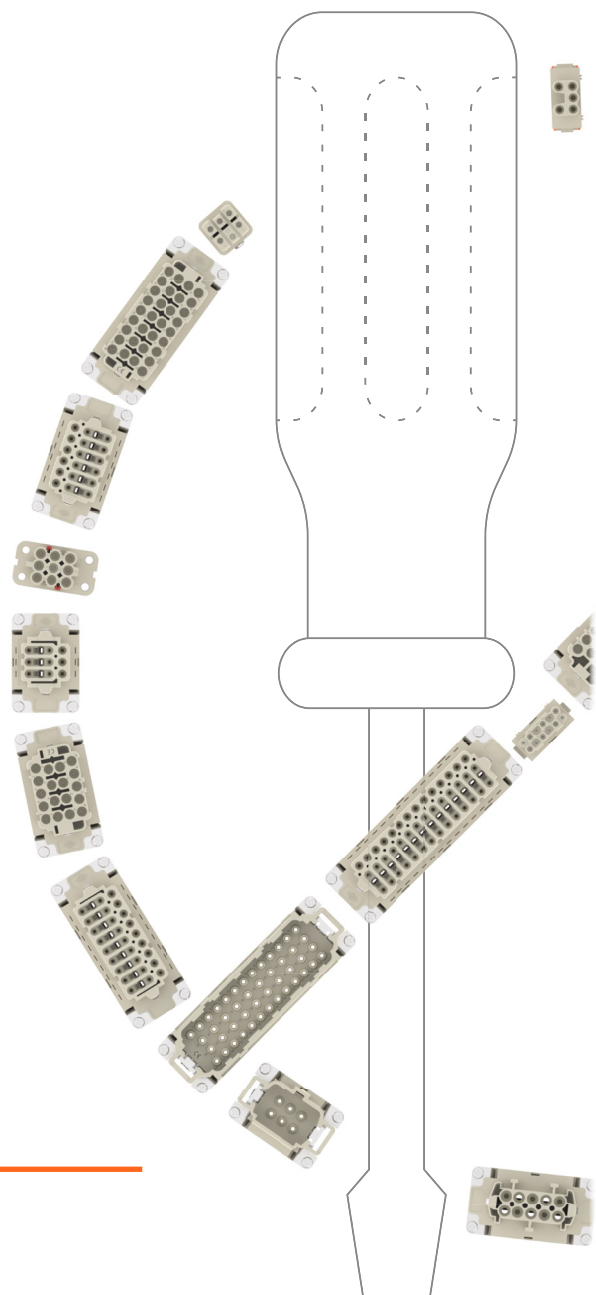
CDY 08

Compact size 21.21

Poles	8
Size	21.21



Rating 10 A 50 V_{AC} / 120 V_{DC} 0,8 kV 3



ILME S.p.A.
Via Marco Antonio Colonna, 9
20149 Milano - Italy
www.ilme.com

