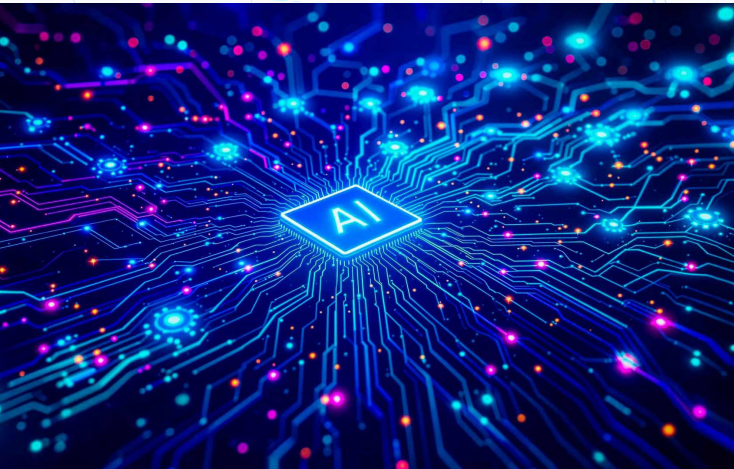


# WHERE INDUSTRY MEETS INTELLIGENCE



EvoNex Pro brings together  
industrial expertise and  
artificial intelligence  
— creating smarter,  
more connected, and  
sustainable operations.

[www.evonexpro.nl](http://www.evonexpro.nl)  
[info@evonexpro.nl](mailto:info@evonexpro.nl)  
Rotterdam, The Netherlands

Sustainability & Contact Info

## Sustainability Through Intelligence



EvoNex Pro supports ESG and EU Green Deal standards by helping companies measure, report, and reduce their carbon footprint. We empower renewable energy facilities with transparent, data-driven sustainability.

**EvoNex Pro B.V.**  
Rotterdam, The Netherlands  
[www.evonexpro.nl](http://www.evonexpro.nl) | [info@evonexpro.nl](mailto:info@evonexpro.nl)

Built on RBS Report technology — trusted by industry leaders.



**EVONEX  
PRO**

Intelligent Industrial & Energy Platform

## TRANSFORMING INDUSTRIAL DATA INTO INTELLIGENCE

[www.evonexpro.nl](http://www.evonexpro.nl)





# About EvoNex Pro



## EMPOWERING INDUSTRIAL INTELLIGENCE

EvoNex Pro connects industrial operations, sensors, and databases into one intelligent ecosystem.

Our platform unifies energy data, optimizes performance, and helps companies move towards carbon-neutral operations with AI-powered insights.



# Real-Time Data Collection & Monitoring

## REAL-TIME VISIBILITY, SMARTER DECISIONS

EvoNex Pro integrates OPC, SCADA, SQL, and InfluxDB systems with real-time dashboards.

Using tools like Grafana and Power BI, we deliver dynamic monitoring and automated reporting for renewable energy and manufacturing industries.



# From Data to Prediction

Our AI modules analyze operational data to predict energy generation, equipment failures, and efficiency losses before they occur.

With built-in machine learning and time-series forecasting, EvoNex Pro turns your data into actionable intelligence.

