

# JT128

Mini Hyper-Hemispherical 3D Lidar



## Hyper-Hemispherical Sensing

360° x 189° ultra-wide FOV



## High-Resolution 3D Detection

128 vertical channels



## Miniature Size

30 mm exposed window height



## 60 m Detection Range

10,000 m<sup>2</sup>+ detection coverage



## Blockage Detection

Cover lens contamination & rain drops detection

## SPECS

RANGING CAPABILITY

30 m @10% reflectivity,  
up to 60 m

DIMENSIONS  
(DIAMETER X HEIGHT)

Φ 60 x H 68 mm

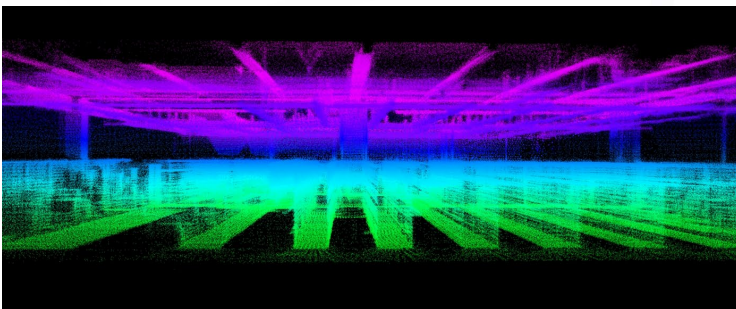
FOV

360° (H) x 189° (V)

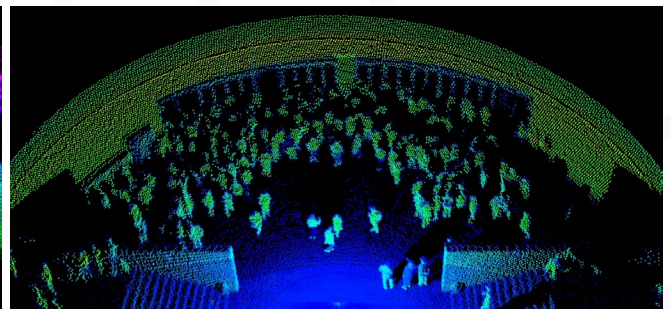
WEIGHT

250 g

## POINT CLOUD



JT128 SLAM Performance



JT128 Live Demo

## APPLICATIONS



Stationary Application

Delivery Robot

AGV/AMR

Service Robot

## PRODUCT HIGHLIGHTS

### COMPACT DESIGN FOR SEAMLESS INTEGRATION

**30<sub>mm</sub>**

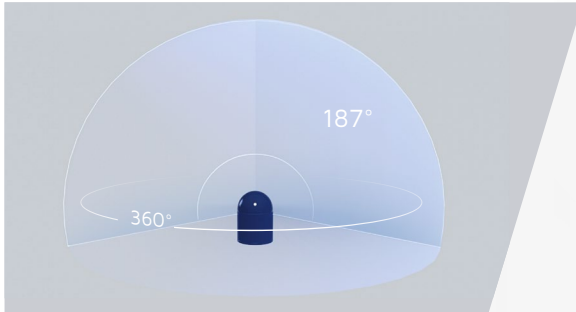
Window Height  
Embedded installation

**30% ↓**

Diameter  
Compared with  
similar products

**70% ↓**

Volume  
Compared with  
similar products



### WORLD'S WIDEST HYPER-HEMISPHERICAL FOV

**360° x 189°**

Ultra-wide FOV

**60% ↑**

Wider than similar products

### REAL-TIME COVER LENS SELF-INSPECTION

**99.9%**

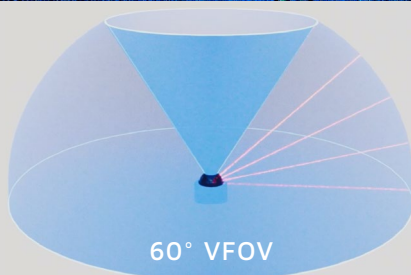
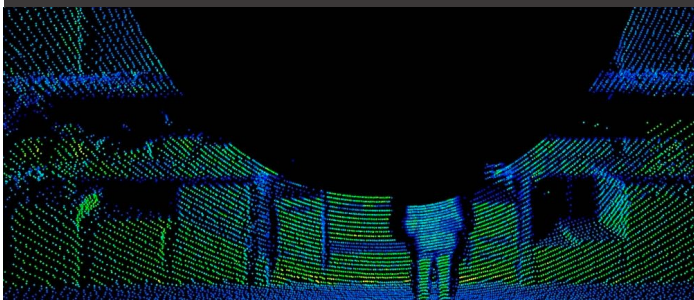
Noise Filtering

- Contamination detection
- Rain drops detection



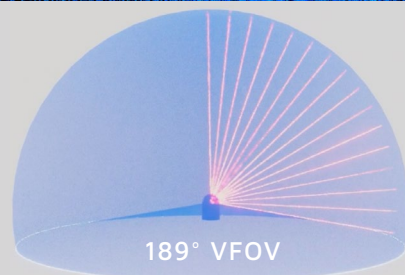
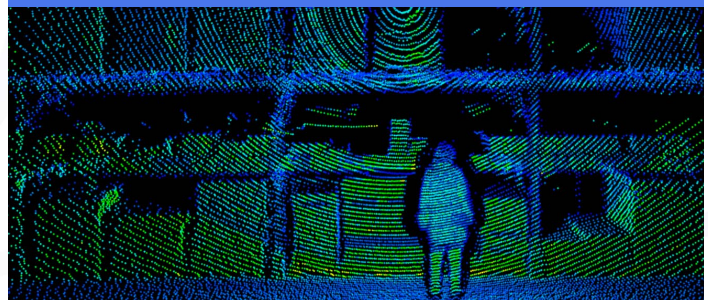
### WIDER VIEW, STRONGER ENVIRONMENTAL PERCEPTION

OTHER WIDE-FOV LIDAR (WITH BLIND SPOTS)



60° VFOV

HESAI JT128 (NO BLIND SPOTS)



189° VFOV

#### Sensor Partners BV

☎ +31 (0)416 - 378239

✉ [info@sensorpartners.com](mailto:info@sensorpartners.com)

🌐 [sensorpartners.com](http://sensorpartners.com)

#### Sensor Partners BVBA

Bergensesteenweg 106A - bus 2

1600 Sint-Pieters-Leeuw

België

☎ +32 (0)2 - 464 96 90

✉ [info@sensors.be](mailto:info@sensors.be)

🌐 [sensors.be](http://sensors.be)



[sensorpartners.com](http://sensorpartners.com)