

# Compact Cylinder / High Power Type **New**

Size: 20, 25, 32, 40

RoHS

Theoretical output:  
**1.5 times**

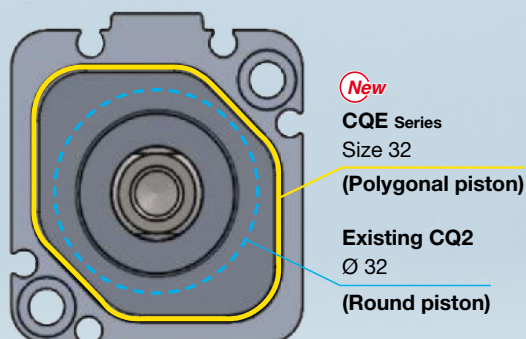
Existing CQ2	<b>New</b> CQE Series
402 N	<b>603 N</b>

\* Size 32, at 0.5 MPa

This is done even with the same external dimensions of the CQ2 series.

\* Sizes 20 and 25 have the same dimensions as the CQS series.

The theoretical output of the next larger bore sized cylinder is made possible with the polygonal piston shape.



Contributes to **a lower pressure air line**  
Supply pressure decreased by **0.17 MPa**

Existing CQ2	<b>New</b> CQE Series
0.5 MPa	<b>0.33 MPa</b>

\* Size 32, for a theoretical output of 400 N

The same theoretical output is available even when the supply pressure to the cylinder is decreased.

## CQE Series



CAT.EUS20-309Aa-UK

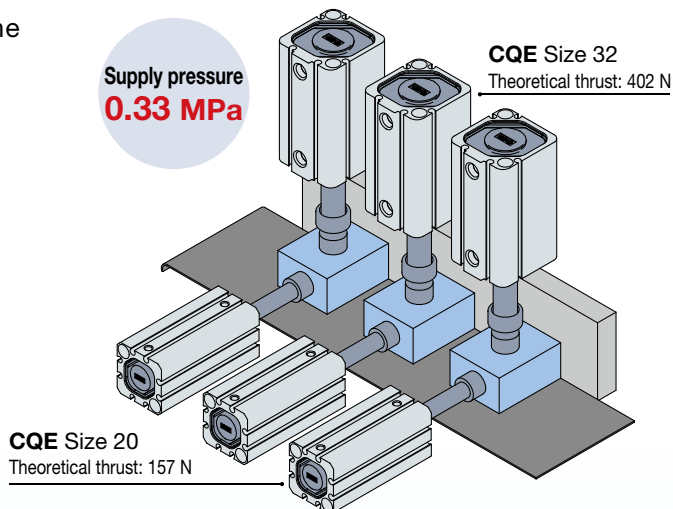
## Low pressure possible

The same theoretical output is available even when the supply pressure to the cylinder is decreased.

Theoretical output	Existing CQ2	<b>New CQE Series</b>
	Operating pressure	Operating pressure
157 N	Ø 20: 0.5 MPa	Size 20: <b>0.32 MPa</b>
245 N	Ø 25: 0.5 MPa	Size 25: <b>0.34 MPa</b>
402 N	Ø 32: 0.5 MPa	Size 32: <b>0.33 MPa</b>
628 N	Ø 40: 0.5 MPa	Size 40: <b>0.35 MPa</b>



Application Clamping and Press fitting



## Compact auto switch is mountable.

Solid state auto switch  
**D-M9**

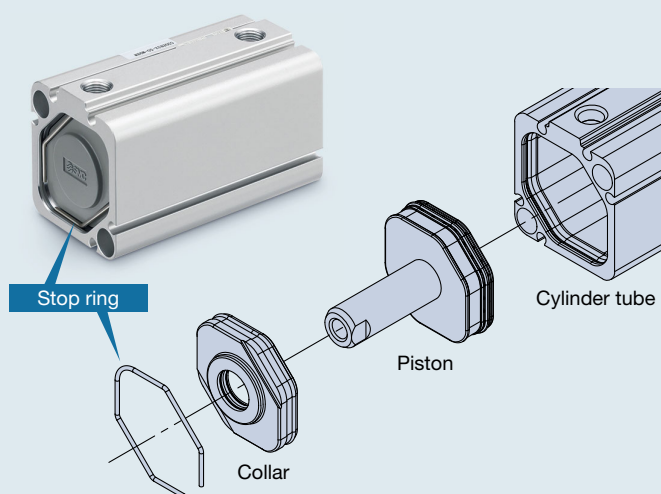


Thanks to the polygonal piston, the piston rod is not rotated during normal operation.



Less time spent replacing seals  
**No special tools required**

The stop ring can be removed with a watchmaker's screwdriver, etc.



## CONTENTS

How to Order .....	p. 2	Auto Switch Mounting .....	p. 5
Specifications .....	p. 3	Specific Product Precautions .....	p. 6
Dimensions .....	p. 4	Safety Instructions .....	Back cover

# Compact Cylinder / High Power Type

# CQE Series

Size: 20, 25, 32, 40

RoHS

## How to Order

**CDQEB 20 - 30 - M9BW**

With auto switch (Built-in magnet)

High power type

Through-hole/Both ends tapped common (Standard)

Size

20	Piston area equivalent to Ø 25
25	Piston area equivalent to Ø 32
32	Piston area equivalent to Ø 40
40	Piston area equivalent to Ø 50

Cylinder stroke

20, 25, 32, 40	5, 10, 15, 20, 25, 30, 35, 40, 45, 50
----------------	---------------------------------------

Number of auto switches

—	2
S	1
n	n

Auto switch

—	Without auto switch
---	---------------------

\* Refer to the table below for the applicable auto switch model.

Body option

—	Standard (Rod end female thread)
M	Rod end male thread

\* Through-hole mounting bolts are available separately. Refer to page 6 for details.

For details on auto switch mounting ⇒ p. 5

- Auto Switch Proper Mounting Position (Detection at stroke end) and Mounting Height
- Minimum Stroke for Auto Switch Mounting
- Operating Range

**Applicable Auto Switches** / Refer to the **Web Catalogue** for further information on auto switches.

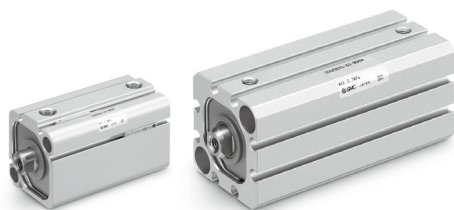
Type	Special function	Electrical entry	Indicator light	Wiring (Output)	Load voltage		Auto switch model		Lead wire length [m]*2				Pre-wired connector	Applicable load		
					DC	AC	Perpendicular	In-line	0.5 (—)	1 (M)	3 (L)	5 (Z)				
Solid state auto switch	—	Grommet	Yes	3-wire (NPN)	24 V	5 V, 12 V	—	M9NV	M9N	●	●	●	○	○	IC circuit	Relay, PLC
	3-wire (PNP)			12 V		M9PV		M9P	●	●	●	○	○			
	2-wire			12 V		M9BV		M9B	●	●	●	○	○			
	3-wire (NPN)			5 V, 12 V		M9NWV		M9NW	●	●	●	○	○			
	Diagnostic indication (2-colour indicator)			3-wire (PNP)	5 V, 12 V	M9PWV	M9PW	●	●	●	○	○	IC circuit			
	Water resistant (2-colour indicator)			2-wire	12 V	M9BWV	M9BW	●	●	●	○	○	—			
				3-wire (NPN)	5 V, 12 V	M9NAV*1	M9NA*1	○	○	●	○	○	IC circuit			
				3-wire (PNP)	12 V	M9PAV*1	M9PA*1	○	○	●	○	○	—			
				2-wire	12 V	M9BAV*1	M9BA*1	○	○	●	○	○	—			

\*1 Water-resistant type auto switches can be mounted on the above models, but SMC cannot guarantee water resistance.

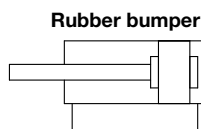
\*2 Lead wire length symbols: 0.5 m..... —  
1 m..... M  
3 m..... L  
5 m..... Z

\* Solid state auto switches marked with a "○" are produced upon receipt of order.

\* Auto switches shipped with the cylinder



## Symbol

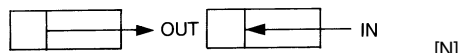


## Specifications

Size	20	25	32	40
<b>Piston area</b>	Equivalent to Ø 25	Equivalent to Ø 32	Equivalent to Ø 40	Equivalent to Ø 50
<b>Action</b>	Double acting, Single rod			
<b>Fluid</b>	Air			
<b>Standard stroke</b>	5 to 50 mm			
<b>Max. operating pressure</b>	0.7 MPa			
<b>Min. operating pressure</b>	0.05 MPa			
<b>Ambient and fluid temperatures</b>	-10 to 60 °C (With auto switch)			
<b>Lubrication</b>	Not required (Non-lube)			
<b>Piston speed</b>	50 to 500 mm/s			
<b>Cushion</b>	Rubber bumper			
<b>Allowable kinetic energy [J]</b>	0.11	0.18	0.29	0.52
<b>Mounting</b>	Through-hole/Both ends tapped common (Standard)			
<b>Stroke length tolerance</b>	0 to +1.0 mm <sup>*1</sup>			

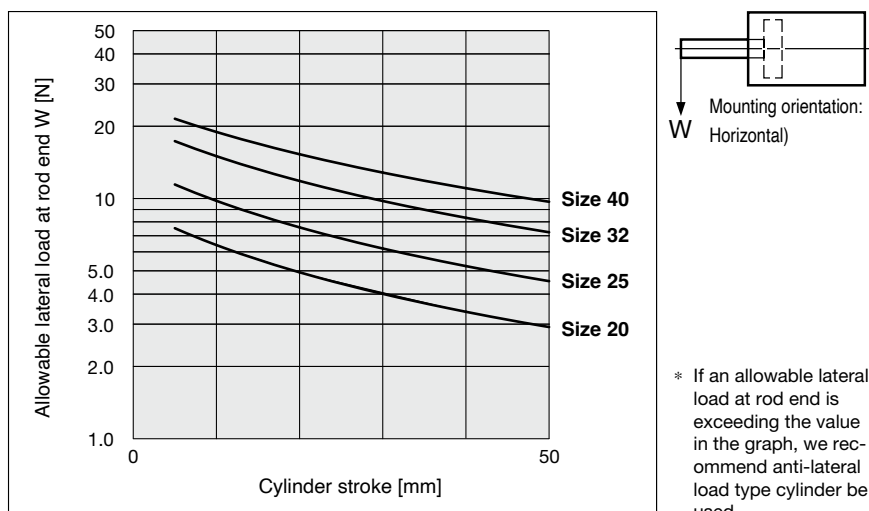
\*1 Stroke length tolerance does not include the amount of bumper change.

## Theoretical Output



Size	Operating direction	Operating pressure [MPa]		
		0.3	0.5	0.7
<b>20</b>	IN	124	206	288
	OUT	147	245	343
<b>25</b>	IN	196	327	458
	OUT	220	366	513
<b>32</b>	IN	316	526	737
	OUT	362	603	844
<b>40</b>	IN	488	814	1139
	OUT	534	891	1247

## Allowable Lateral Load at Rod End



## Weight

### With Auto Switch Magnet

Size	Cylinder stroke [mm]									
	5	10	15	20	25	30	35	40	45	50
<b>20</b>	96	108	120	131	143	154	166	177	189	201
<b>25</b>	127	139	151	164	176	188	201	213	225	238
<b>32</b>	183	200	217	233	250	267	284	301	318	334
<b>40</b>	286	305	324	343	362	381	400	419	438	457

### Additional Weight

Size	20	25	32	40
Rod end male thread	6	12	26	27
male thread Nut	4	8	17	17

Calculation: (Example) **CDQEB32-20M**

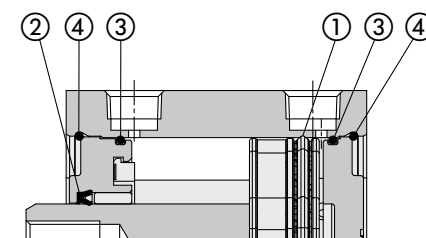
• Basic weight: CDQEB32-20 ..... 233 g

• Additional weight: Rod end male thread ..... 43 g

276 g

Add each weight of auto switches when auto switches are mounted.

## Replacement Parts



No.	Description	Material	Note
<b>1</b>	<b>Piston seal</b>	NBR	
<b>2</b>	<b>Rod seal</b>	NBR	
<b>3</b>	<b>Tube gasket</b>	NBR	
<b>4</b>	<b>Stop ring</b>	Stainless steel	

Size	Kit no.	Contents
<b>20</b>	CQEB20-PS	Set of nos. ①, ②, ③, ④
<b>25</b>	CQEB25-PS	
<b>32</b>	CQEB32-PS	
<b>40</b>	CQEB40-PS	

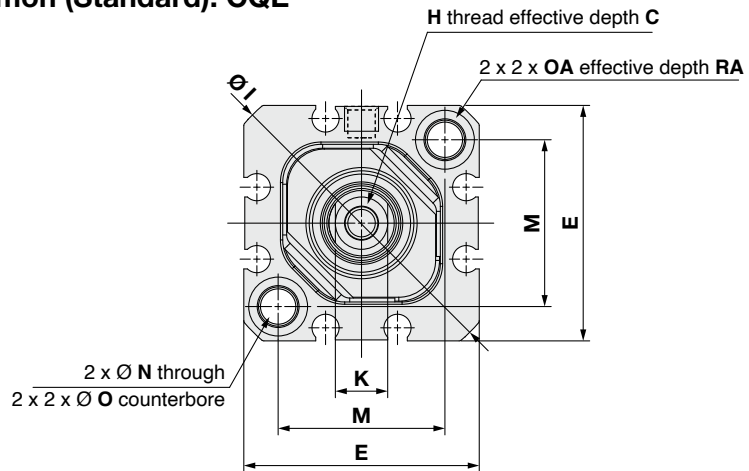
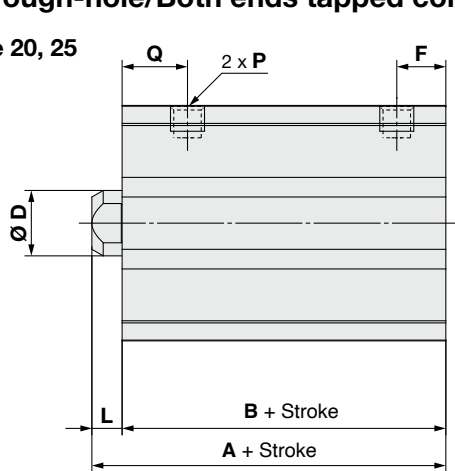
\* The seal kit does not include a grease pack. Order it separately.

Grease pack part no.: GR-S-010 (10 g)

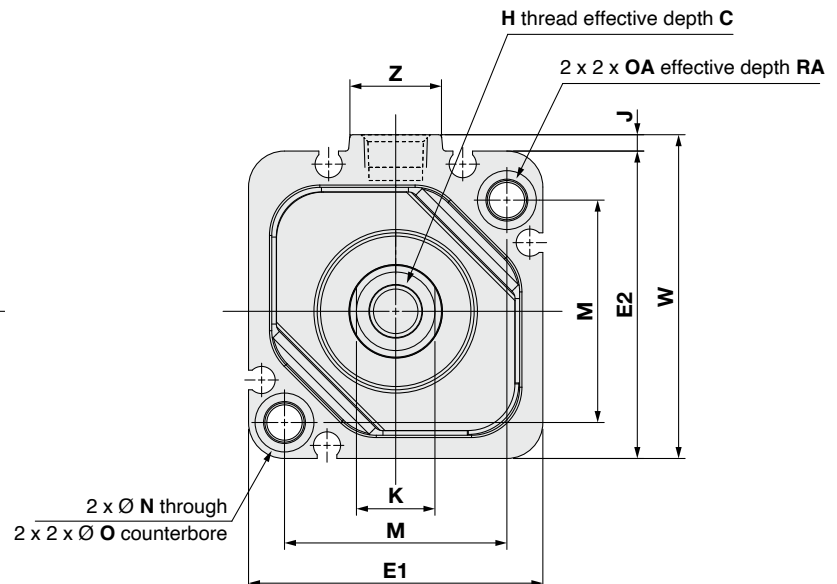
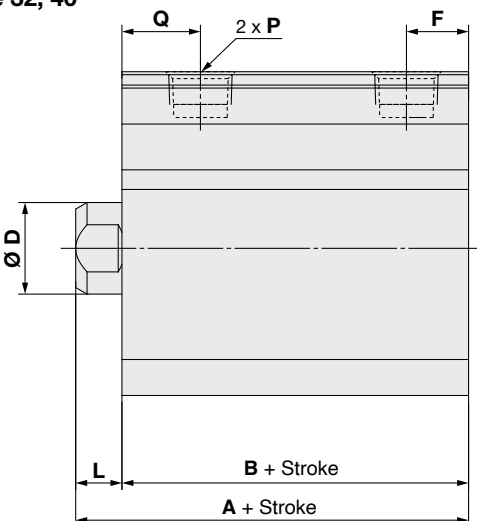
## Size: 20 to 40

### Through-hole/Both ends tapped common (Standard): CQE

#### Size 20, 25



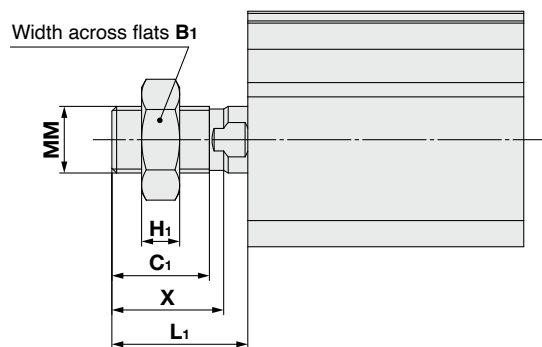
#### Size 32, 40



\* The orientation of the flats on the piston rod has no relation to the cylinder body.

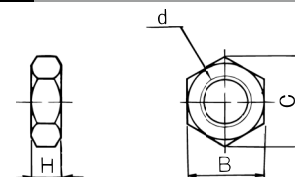
Size	A	B	C	D	E	E1	E2	F	H	I	J	K	L	M	N	O	OA	P	Q	RA	W	Z
20	34	29.5	7	10	36	—	—	7.5	M5 x 0.8	47	—	8	4.5	25.5	5.4	9 depth 7	M6 x 1.0	M5 x 0.8	10	10	—	—
25	37.5	32.5	12	10	40	—	—	7.5	M6 x 1.0	52	—	8	5	28	5.4	9 depth 7	M6 x 1.0	M5 x 0.8	12.5	10	—	—
32	40	33	13	14	—	45	47	9.5	M8 x 1.25	—	2.5	12	7	34	5.4	9 depth 7	M6 x 1.0	Rc1/8	12	10	50	14
40	46.5	39.5	13	14	—	52	55	11	M8 x 1.25	—	2	12	7	40	5.4	9 depth 7	M6 x 1.0	Rc1/8	16	10	57	14

#### Rod end male thread



Size	B <sub>1</sub>	C <sub>1</sub>	H <sub>1</sub>	L <sub>1</sub>	MM	X
20	13	12	5	18.5	M8 x 1.25	14
25	17	15	6	22.5	M10 x 1.25	17.5
32	22	20.5	8	28.5	M14 x 1.5	21.5
40	22	20.5	8	28.5	M14 x 1.5	21.5

#### Rod End Nut



Material: Carbon steel

Surface treatment: Zinc chromated [mm]

Size	Part no.	d	H	B	C	Weight [g]
20	NT-02	M8 x 1.25	5	13	15.0	4
25	NT-03	M10 x 1.25	6	17	19.6	8
32, 40	NT-04	M14 x 1.5	8	22	25.4	17



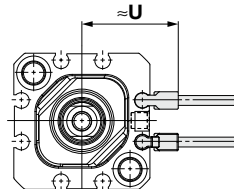
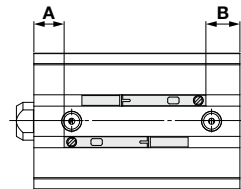
# CQE Series

## Auto Switch Mounting

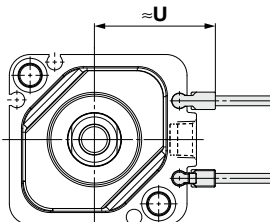
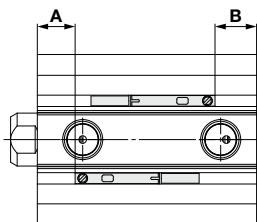
### Auto Switch Proper Mounting Position (Detection at stroke end) and Mounting Height

D-M9□  
D-M9□V  
D-M9□W  
D-M9□WV  
D-M9□A  
D-M9□AV

Size 20, 25



Size 32, 40



### Auto Switch Proper Mounting Position

\* Adjust the auto switch after confirming the operating conditions in the actual setting.

Auto switch model Size	[mm]	
	A	B
D-M9□ D-M9□V D-M9□W D-M9□WV D-M9□A D-M9□AV		
20	8	9
25	10.5	10.5
32	10	10.5
40	14.5	13

### Auto Switch Mounting Height

Auto switch model Size	[mm]	
	U	
D-M9□V D-M9□WV D-M9□AV		
20	25.5	
25	27.5	
32	32	
40	36.5	

### Minimum Stroke for Auto Switch Mounting

Number of auto switches	[mm]	
	D-M9□(V)	D-M9□W(V) D-M9□A(V)
1	5	5
2	5	10

\* If the stroke is short, be careful to ensure sufficient space for a lead wire.

\* Refer to the operation manual for auto switch installation instructions and tightening torques.

### Operating Range

Auto switch model	Size [mm]			
	20	25	32	40
D-M9□(V) D-M9□W(V) D-M9□A(V)*1	3.5	3	3.5	4



# CQE Series

## Specific Product Precautions

Be sure to read this before handling the products. For safety instructions, actuator, and auto switch precautions, refer to the “Handling Precautions for SMC Products” and the “Operation Manual” on the SMC website: <https://www.smc.eu>

### Handling

#### ⚠ Caution

1. Operate the cylinder in such a way that the load to the piston rod is always applied in the axial direction.
2. Make sure that the piston rod is fully retracted when securing a workpiece on the rod end. Make use of the flats on the rod end and tighten it without applying a rotational torque to the piston rod.
  - In cases where a rotational torque is unavoidable, tighten a workpiece within the allowable mounting torque range.
  - When installing a cylinder, centering should be required accurately.

Bore size [mm]	20	25	32	40
Allowable torque for mounting workpiece	1.7 N·m	1.7 N·m	1.9 N·m	2.0 N·m

3. This product uses a stop ring for securing a collar and a bottom plate. If a large external force is applied to the stop ring during maintenance, plastic deformation may occur.

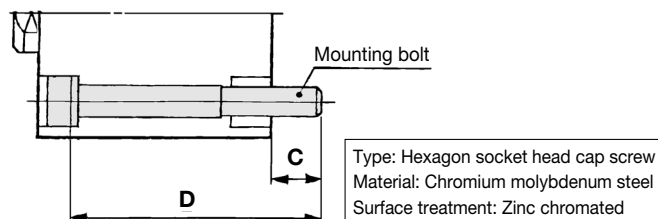
### Mounting Bolt for the CDQE

Mounting bolt for the through-hole mounting of the CDQEB is available as an option.

Refer to the following for ordering procedures.

Order the actual number of bolts that will be used.

**Example) CQ-M5X35L 2 pcs.**



\* Be sure to use the supplied flat washers when mounting a cylinder via the through holes.

Cylinder model	C	D	Mounting bolt part no.
<b>CDQEB20-5</b>	6.5	35	CQ-M5X35L
-10		40	X40L
-15		45	X45L
-20		50	X50L
-25		55	X55L
-30		60	X60L
-35		65	X65L
-40		70	X70L
-45		75	X75L
-50		80	X80L
<b>CDQEB25-5</b>	9.5	40	CQ-M5X40L
-10		45	X45L
-15		50	X50L
-20		55	X55L
-25		60	X60L
-30		65	X65L
-35		70	X70L
-40		75	X75L
-45		80	X80L
-50		85	X85L
<b>CDQEB32-5</b>	9	40	CQ-M5X40L
-10		45	X45L
-15		50	X50L
-20		55	X55L
-25		60	X60L
-30		65	X65L
-35		70	X70L
-40		75	X75L
-45		80	X80L
-50		85	X85L
<b>CDQEB40-5</b>	7.5	45	CQ-M5X45L
-10		50	X50L
-15		55	X55L
-20		60	X60L
-25		65	X65L
-30		70	X70L
-35		75	X75L
-40		80	X80L
-45		85	X85L
-50		90	X90L

## Safety Instructions

These safety instructions are intended to prevent hazardous situations and/or equipment damage. These instructions indicate the level of potential hazard with the labels of “Caution,” “Warning” or “Danger.” They are all important notes for safety and must be followed in addition to International Standards (ISO/IEC) <sup>1)</sup>, and other safety regulations.

### Danger:

**Danger** indicates a hazard with a high level of risk which, if not avoided, will result in death or serious injury.

### Warning:

**Warning** indicates a hazard with a medium level of risk which, if not avoided, could result in death or serious injury.

### Caution:

**Caution** indicates a hazard with a low level of risk which, if not avoided, could result in minor or moderate injury.

- 1) ISO 4414: Pneumatic fluid power – General rules and safety requirements for systems and their components.
- ISO 4413: Hydraulic fluid power – General rules and safety requirements for systems and their components.
- IEC 60204-1: Safety of machinery – Electrical equipment of machines. (Part 1: General requirements)
- ISO 10218-1: Robots and robotic devices - Safety requirements for industrial robots - Part 1: Robots.
- etc.

## Warning

### 1. The compatibility of the product is the responsibility of the person who designs the equipment or decides its specifications.

Since the product specified here is used under various operating conditions, its compatibility with specific equipment must be decided by the person who designs the equipment or decides its specifications based on necessary analysis and test results. The expected performance and safety assurance of the equipment will be the responsibility of the person who has determined its compatibility with the product. This person should also continuously review all specifications of the product referring to its latest catalogue information, with a view to giving due consideration to any possibility of equipment failure when configuring the equipment.

### 2. Only personnel with appropriate training should operate machinery and equipment.

The product specified here may become unsafe if handled incorrectly. The assembly, operation and maintenance of machines or equipment including our products must be performed by an operator who is appropriately trained and experienced.

### 3. Do not service or attempt to remove product and machinery/equipment until safety is confirmed.

1. The inspection and maintenance of machinery/equipment should only be performed after measures to prevent falling or runaway of the driven objects have been confirmed.
2. When the product is to be removed, confirm that the safety measures as mentioned above are implemented and the power from any appropriate source is cut, and read and understand the specific product precautions of all relevant products carefully.
3. Before machinery/equipment is restarted, take measures to prevent unexpected operation and malfunction.

### 4. Our products cannot be used beyond their specifications. Our products are not developed, designed, and manufactured to be used under the following conditions or environments.

**Use under such conditions or environments is not covered.**

1. Conditions and environments outside of the given specifications, or use outdoors or in a place exposed to direct sunlight.
2. Use for nuclear power, railways, aviation, space equipment, ships, vehicles, military application, equipment affecting human life, body, and property, fuel equipment, entertainment equipment, emergency shut-off circuits, press clutches, brake circuits, safety equipment, etc., and use for applications that do not conform to standard specifications such as catalogues and operation manuals.
3. Use for interlock circuits, except for use with double interlock such as installing a mechanical protection function in case of failure. Please periodically inspect the product to confirm that the product is operating properly.

## Caution

**We develop, design, and manufacture our products to be used for automatic control equipment, and provide them for peaceful use in manufacturing industries.**

**Use in non-manufacturing industries is not covered.**

Products we manufacture and sell cannot be used for the purpose of transactions or certification specified in the Measurement Act.

The new Measurement Act prohibits use of any unit other than SI units in Japan.

## Limited warranty and Disclaimer/Compliance Requirements

The product used is subject to the following “Limited warranty and Disclaimer” and “Compliance Requirements”. Read and accept them before using the product.

### Limited warranty and Disclaimer

1. The warranty period of the product is 1 year in service or 1.5 years after the product is delivered, whichever is first. <sup>2)</sup> Also, the product may have specified durability, running distance or replacement parts. Please consult your nearest sales branch.
2. For any failure or damage reported within the warranty period which is clearly our responsibility, a replacement product or necessary parts will be provided. This limited warranty applies only to our product independently, and not to any other damage incurred due to the failure of the product.
3. Prior to using SMC products, please read and understand the warranty terms and disclaimers noted in the specified catalogue for the particular products.
- 2) Vacuum pads are excluded from this 1 year warranty.  
A vacuum pad is a consumable part, so it is warranted for a year after it is delivered. Also, even within the warranty period, the wear of a product due to the use of the vacuum pad or failure due to the deterioration of rubber material are not covered by the limited warranty.

### Compliance Requirements

1. The use of SMC products with production equipment for the manufacture of weapons of mass destruction (WMD) or any other weapon is strictly prohibited.
2. The exports of SMC products or technology from one country to another are governed by the relevant security laws and regulations of the countries involved in the transaction. Prior to the shipment of a SMC product to another country, assure that all local rules governing that export are known and followed.

## Safety Instructions

Be sure to read “Handling Precautions for SMC Products” (M-E03-3) before using.



SMC Corporation (Europe)

Austria	+43 (0)2262622800	www.smc.at	office@smc.at
Belgium	+32 (0)33551464	www.smc.be	info@smc.be
Bulgaria	+359 (0)2807670	www.smc.bg	office@smc.bg
Croatia	+385 (0)13707288	www.smc.hr	office@smc.hr
Czech Republic	+420 541424611	www.smc.cz	office@smc.cz
Denmark	+45 70252900	www.smc.dk.com	smc@smcdk.com
Estonia	+372 651 0370	www.smcee.ee	info@smcee.ee
Finland	+358 207513513	www.smc.fi	smc.fi@smc.fi
France	+33 (0)164761000	www.smc-france.fr	supportclient@smc-france.fr
Germany	+49 (0)61034020	www.smc.de	info@smc.de
Greece	+30 210 2717265	www.smchellas.gr	sales@smchellas.gr
Hungary	+36 23513000	www.smc.hu	office@smc.hu
Ireland	+353 (0)14039000	www.smcautomation.ie	sales@smcautomation.ie
Italy	+39 03990691	www.smcitalia.it	mailbox@smcitalia.it
Latvia	+371 67817700	www.smc.lv	info@smc.lv

Lithuania	+370 5 2308118	www.smclt.lt	info@smclt.lt
Netherlands	+31 (0)205318888	www.smc.nl	info@smc.nl
Norway	+47 67129020	www.smc-norge.no	post@smc-norge.no
Poland	+48 222119600	www.smc.pl	sales@smc.pl
Portugal	+351 214724500	www.smc.eu	apoioclientept@smc.smces.es
Romania	+40 213205111	www.smcromania.ro	smcromania@smcromania.ro
Russia	+7 (812)3036600	www.smc.eu	sales@smcru.com
Slovakia	+421 (0)413213212	www.smc.sk	office@smc.sk
Slovenia	+386 (0)73885412	www.smc.si	office@smc.si
Spain	+34 945184100	www.smc.eu	post@smc.smces.es
Sweden	+46 (0)86031240	www.smc.nu	smc@smc.nu
Switzerland	+41 (0)523963131	www.smc.ch	info@smc.ch
Turkey	+90 212 489 0 440	www.smcturkey.com.tr	info@smcturkey.com.tr
UK	+44 (0)845 121 5122	www.smc.uk	sales@smc.uk

South Africa	+27 10 900 1233	www.smcza.co.za	zasales@smcza.co.za
--------------	-----------------	-----------------	---------------------