



# Unlock your industrial digital twin power



LIGHTSTREAM

# About us

Welcome to lightstream, where expertise in electrical engineering blends seamlessly with innovation to redefine industry standards.

Established in 2015 by Dylan Caufrier, Lightstream began as a freelance project before evolving into a reputable BV in 2019. Right from the outset, Lightstream was more than just an engineering agency. It was envisioned as a dynamic entity, meticulously crafted and managed by experts proficient in every aspect of electricity, ranging from High voltage and Low voltage distribution to PLC hardware engineering, Drive technology and Network technology.

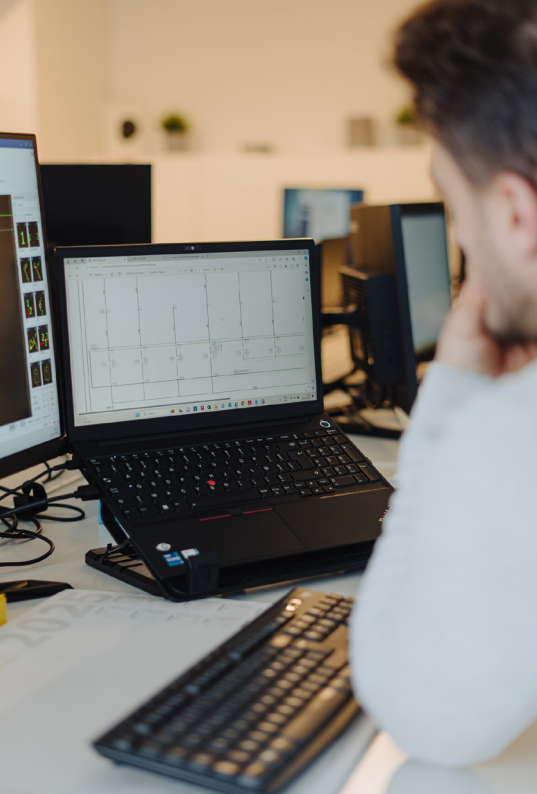
Our core mission is all about customer intimacy. We take pride in our in-depth understanding of our clients' needs, installations and maintenance challenges. This deep understanding is the basis of our approach, guiding us to develop tailored solutions that consistently surpass expectations. Hence, we firmly believe that our shared language for collaboration lies within the industrial twin. This twin must function as a real-time model, ensuring that every technical alteration is securely preserved.



Recognizing the growing significance of digital twins within the industrial landscape, we foresaw the digital challenges that would accompany this paradigm shift. With this foresight, we embarked on a journey to develop the CabinetManager platform—a sophisticated solution designed to seamlessly integrate changes into digital models and support maintenance technicians in their daily endeavors.

Today, as we stand at the threshold of our envisioned future, we proudly reflect on our journey and the milestones we've achieved. Our cooperation model, coupled with the CabinetManager platform, has not only demonstrated its efficacy but has also set new benchmarks in the realm of industrial asset maintenance.

**Dylan Caufrier**



# Maintain trust

Design and digital maintenance of your industrial machinery. The hand on the shoulder of your maintenance technicians.

**We breathe Volts,  
eat Ampères for  
breakfast, radiate  
Lumens and can't  
resist a Watt.**



LIGHTSTREAM

[lightstream.be](http://lightstream.be)



## Electrical engineering

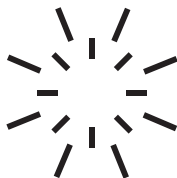
We design your electrical installation according to your needs.

Every design is focused on the best possible efficiency, reducing complexity and improved user experience for maintenance personell. This ensures that you can count on the best possible solution at a market conform price.

We supervise the project on the yard from first spade till the commissioning of your electrical installation.

Every Design is made using cutting edge software in electrical engineering, cable calculation ... After commissioning, we see to it that the complete installation is secured in an asbuiltdossier.

Our proven track record within power management and automation ensures a futureproof installation, fully dimensioned, according to your needs.



## Lighting solutions

Every room, building or environment requires specific lighting solutions.

Our virtual techniques provide a detailed 3D model of your room, building or environment. This virtual model enables us, to work out the best possible lighting solution according to your need.

Our focus on energy saving and maintenance cost Guarantees a considerable saving during build and maintain phase, on the other hand it provides a lighting solution completely compliant to the nature of the building, its functionality and visual comfort for it's inhabitants and workforce.

All our engineers are trained with Dialux Evo. Every engineer is trained by KUL Leuven department Lighting technology. Lightstream is a close partner of KUL Leuven and it's subsidiary Groen Licht Vlaanderen vzw.

---

Trusted by



---

Lightstream is partner of Groen Licht Vlaanderen, spinoff from KUL Laboratory for Lighting Technology



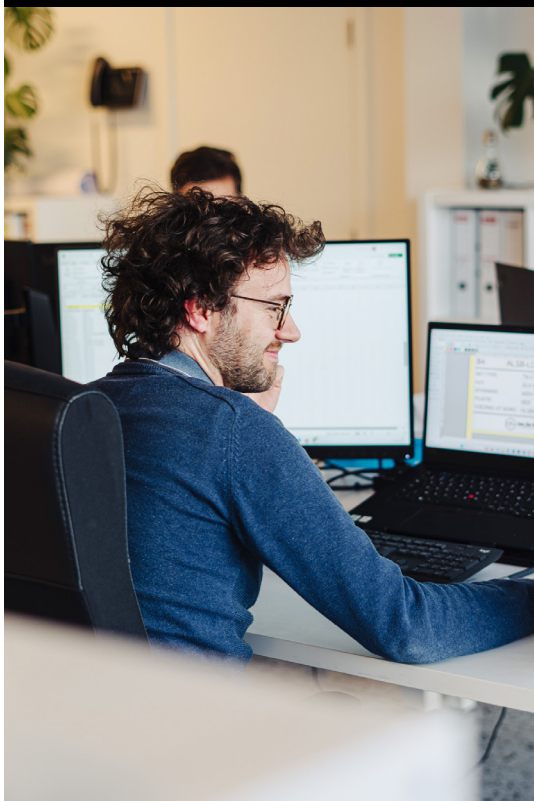
# Gain time

## Manage all documents

Have real-time access to up-to-date technical information.

Cabinet Manager ensures a cost-efficient and secure workflow:

- Scan the QR code on the technical installation. Via personal login you get access to the necessary information. No information overload, only information that is relevant to you.
- From plans, inspection reports and manuals to emergency contacts: everything is available digitally in one place.
- Adjustments are visible in real time to colleagues and technical partners.
- Share quick fixes and insights through the Frequently Encountered Problems feature and help your colleagues solve problems faster. The software is available in 5 languages so that everyone in your international team can find their way around quickly.
- Log in easily via tablet, smartphone and desktop. You don't need an app for that. Handy!



Cabinet Manager is a  
product from Lightstream bv.

Businesspark "New Westral"  
Steenweg Deinze 150  
9810 Nazareth, Belgium

[info@cabinetmanager.be](mailto:info@cabinetmanager.be)  
+32 479 29 63 65  
[cabinetmanager.be](http://cabinetmanager.be)