

Rittal – The System.

Faster – better – everywhere.

Rittal Innovations 2023/24

ENCLOSURES

POWER DISTRIBUTION

CLIMATE CONTROL

IT INFRASTRUCTURE

SOFTWARE & SERVICES

FRIEDHELM LOH GROUP



Joining forces to add value

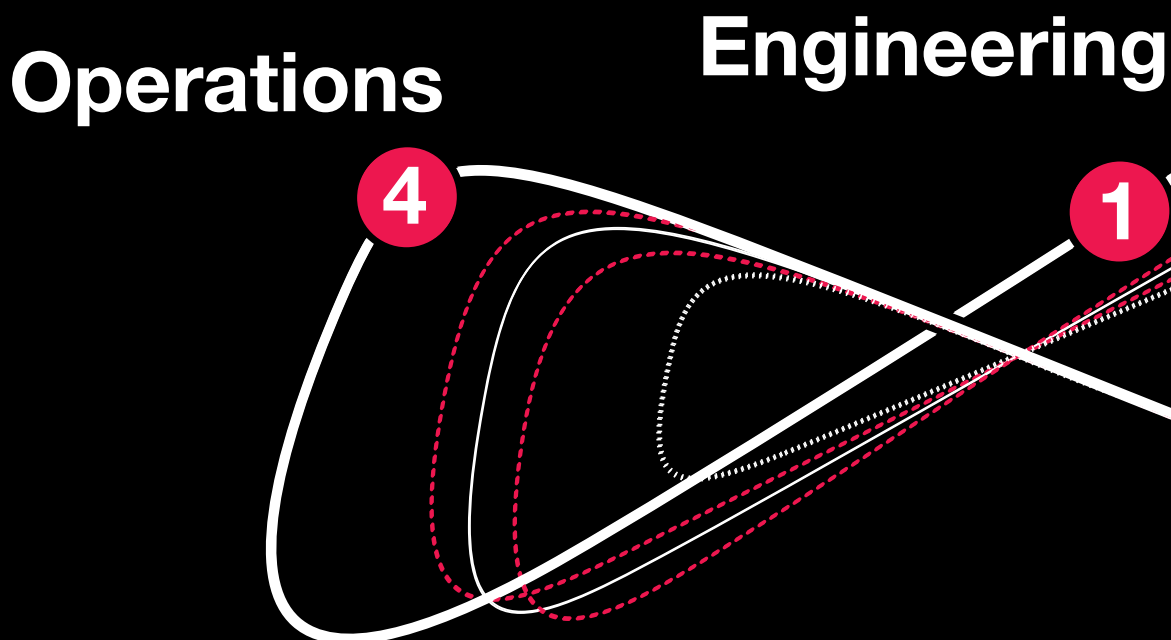
Powerful partners Eplan and Rittal have a shared philosophy: To make complex things simple. Our solutions speed up your processes and boost your productivity. We optimise and industrialise every stage in your value chain and across the entire process – from design, planning and engineering, procurement and manufacturing through to operation and IT. With our help, you can triumph in the industrial transformation to the new Industry 4.0 standard.

Our goal:

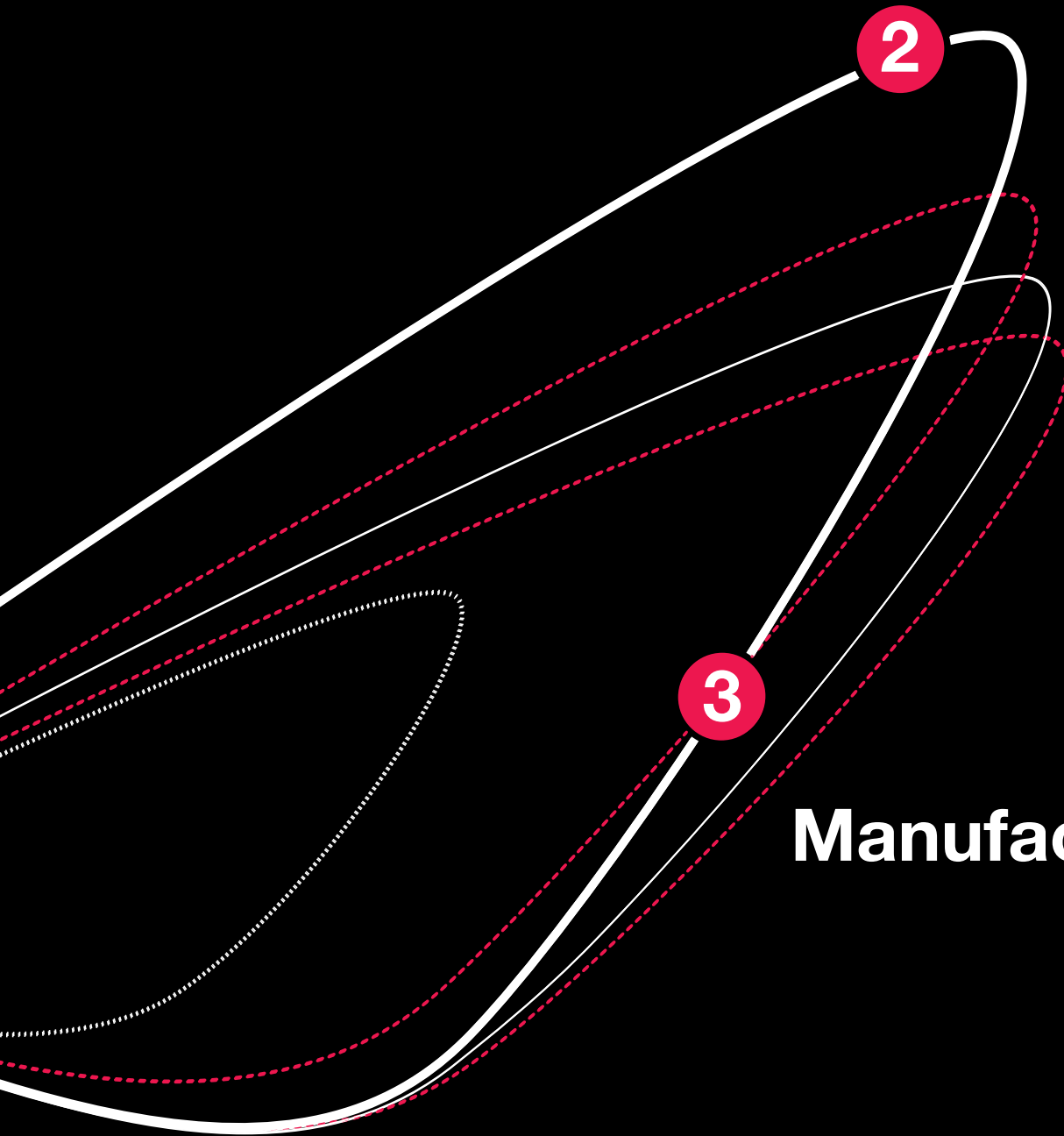
Yesterday, we devised the solutions our customers will need tomorrow, and we are already stocking them today.

Rittal and Eplan. Your partners for the future.

We think in terms of your processes.



Sourcing



Manufacturing

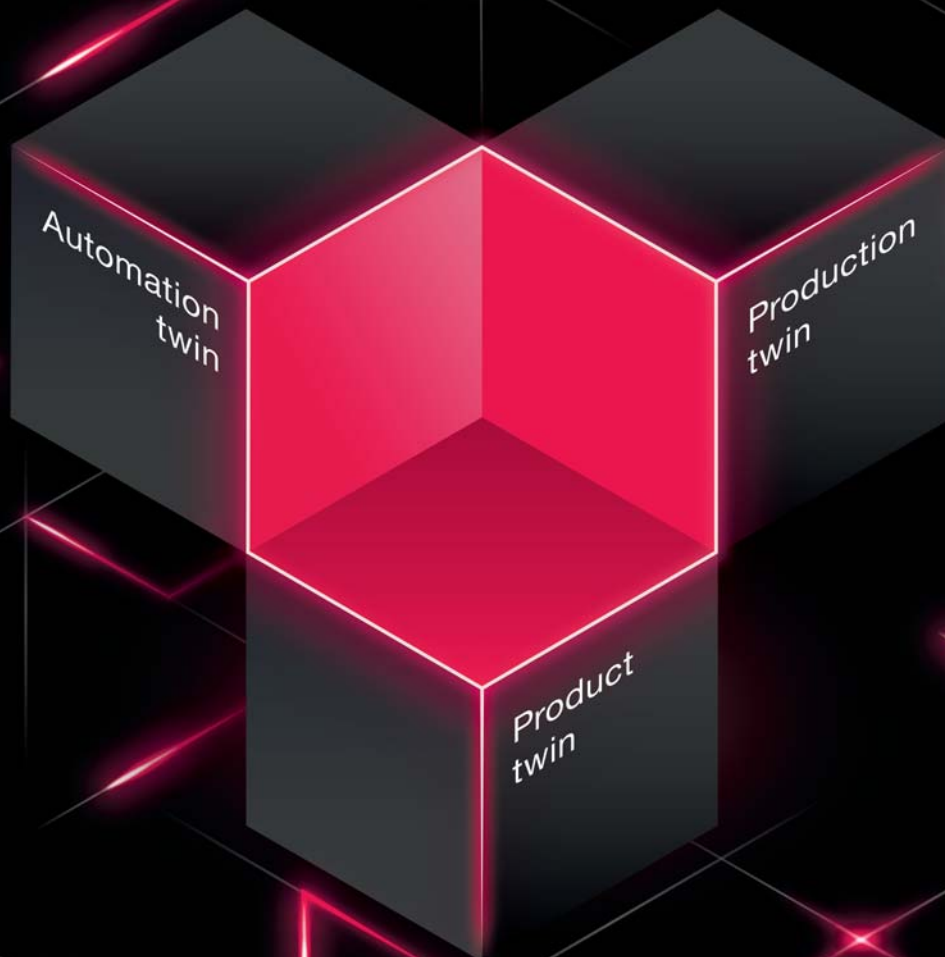


At last: Smart production

Cost-effective production with highly automated, efficient processes is the holy grail of the manufacturing industry. That's nothing new. With more recent demands on energy monitoring and energy management, however, the need is even more pressing. Data from systems, product manufacturing and production processes is essential for calculating and minimising a product's carbon footprint, and equally vital for monitoring energy flows in production, avoiding and managing peak loads, and potentially controlling production according to energy availability and energy costs.

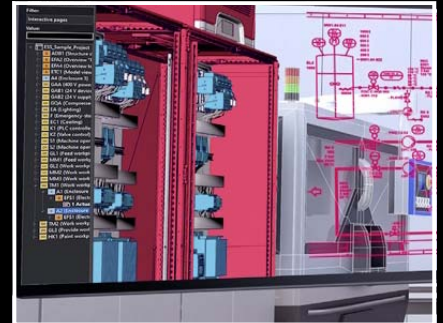
Crucial potential can be tapped by optimising and industrialising your process chains. Together, Rittal, Eplan, Cideon and German Edge Cloud reveal how you can optimise processes in automation engineering, product manufacturing and the production process and how you can interlink the new ecosystems using digital twins.

With their domain knowledge from panel building and switchgear manufacturing, PLM/PDM system integration and IIoT sectors, Rittal, Eplan, Cideon and German Edge Cloud are helping customers make the transition towards smart production.



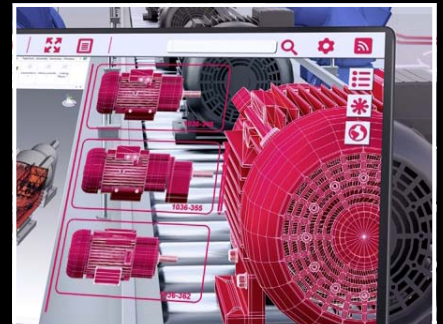
Automation twin

For the panel building and switchgear manufacturing sectors, Rittal and Eplan digitalise the entire value chain – from the design, planning and engineering stage through to plant operation. As well as saving time and money, this also provides comprehensive system data for maintenance, smart services and system networking, all of which are crucial when developing a smart production system.



Product twin

Cideon improves data consistency in connection with the digital product twin on the basis of its experience in CAD/CAM, PDM/PLM and product configuration. Your production line receives a machine-readable dataset for each individual product from a potentially endless variety of configurations.

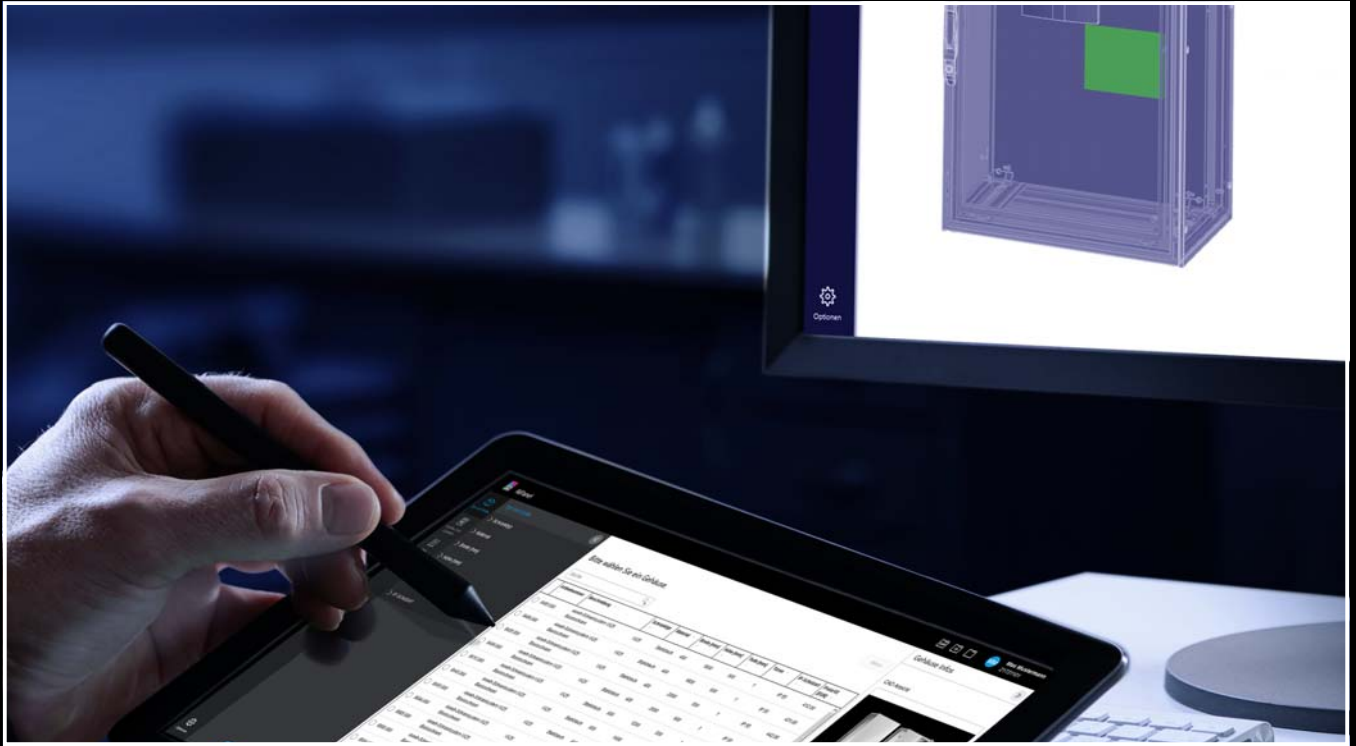


Production twin

German Edge Cloud uses all the data for faster networking and full process transparency with the help of the digital production twin. IIoT-enabled production management with the ONCITE Digital Production System then increases the efficiency and flexibility of manufacturing – actionable, application-oriented and with maximum data sovereignty.



RiPanel



RiPanel – Your cutting-edge tool for simple enclosure system configuration. Effortlessly meet individual requirements with RiPanel. Below you will find an overview of all functions.

- Effortlessly select a matching enclosure system with the user-friendly interface
- Plausibility-checked, error-free selection of accessories with direct positioning in a realistic 3D view
- Add customer-specific cut-outs and import CAD data for precise renderings
- Automatically generate technical data for uncomplicated enquiries and orders

Discover RiPanel's efficiency and precision and optimise your enclosure configurations today.

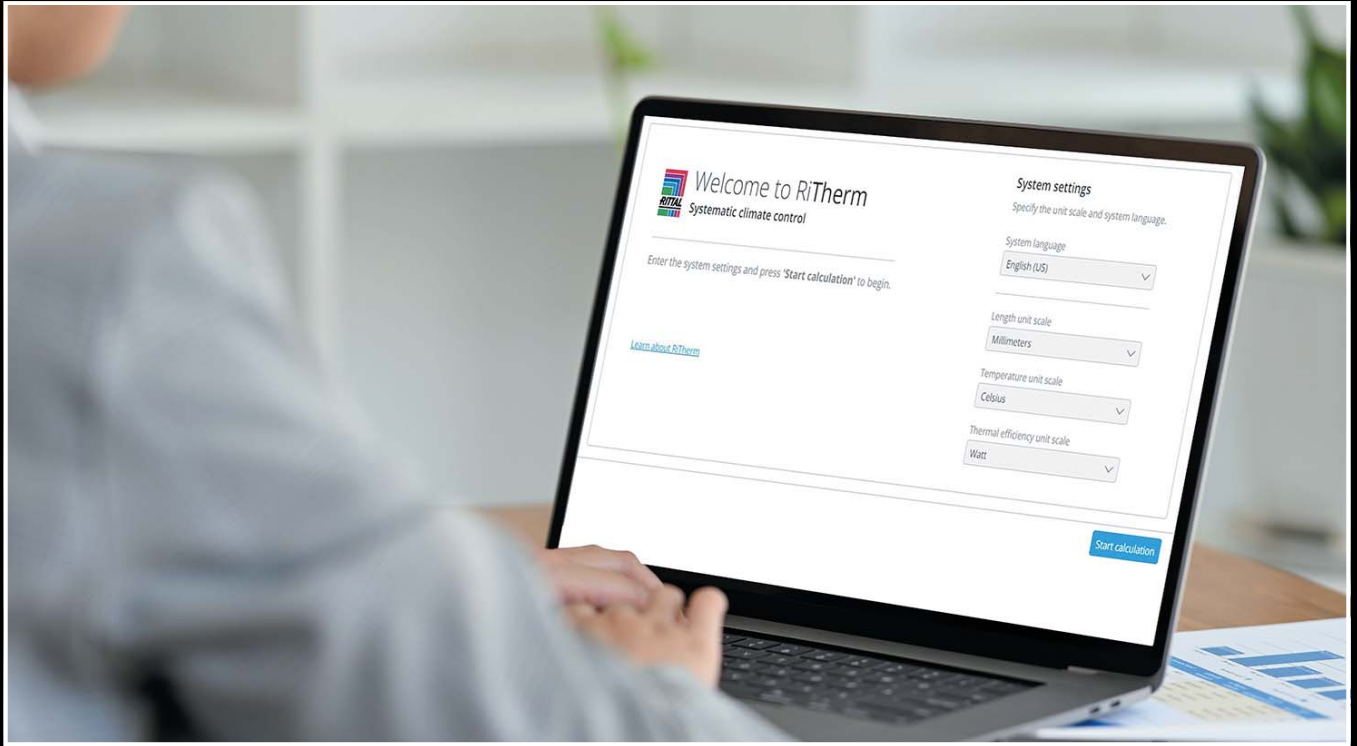
Your benefits

- Save time with simple configuration and ordering processes
- Avoid errors when selecting and machining accessories
- Enhance your planning with a concurrent parts list and transparent price display
- Accelerate processes with integrated interfaces to Eplan and Rittal software



More about RiPanel can be found here:

www.rittal.com/RiPanel



Our new RiTherm planning software, now integrated into the ePLAN Cloud, redefines efficiency and strikes the perfect balance between cost-effectiveness and climate protection when planning your enclosure climate control.

Features of the new RiTherm:

Quickly and easily design the correct climate control for your switchgear:

- Calculate and select all ambient conditions
- Optionally define your altitude (which influences cooling output)
- Calculate bayed enclosure suites according to your requirements
- Get recommendations for matching accessories

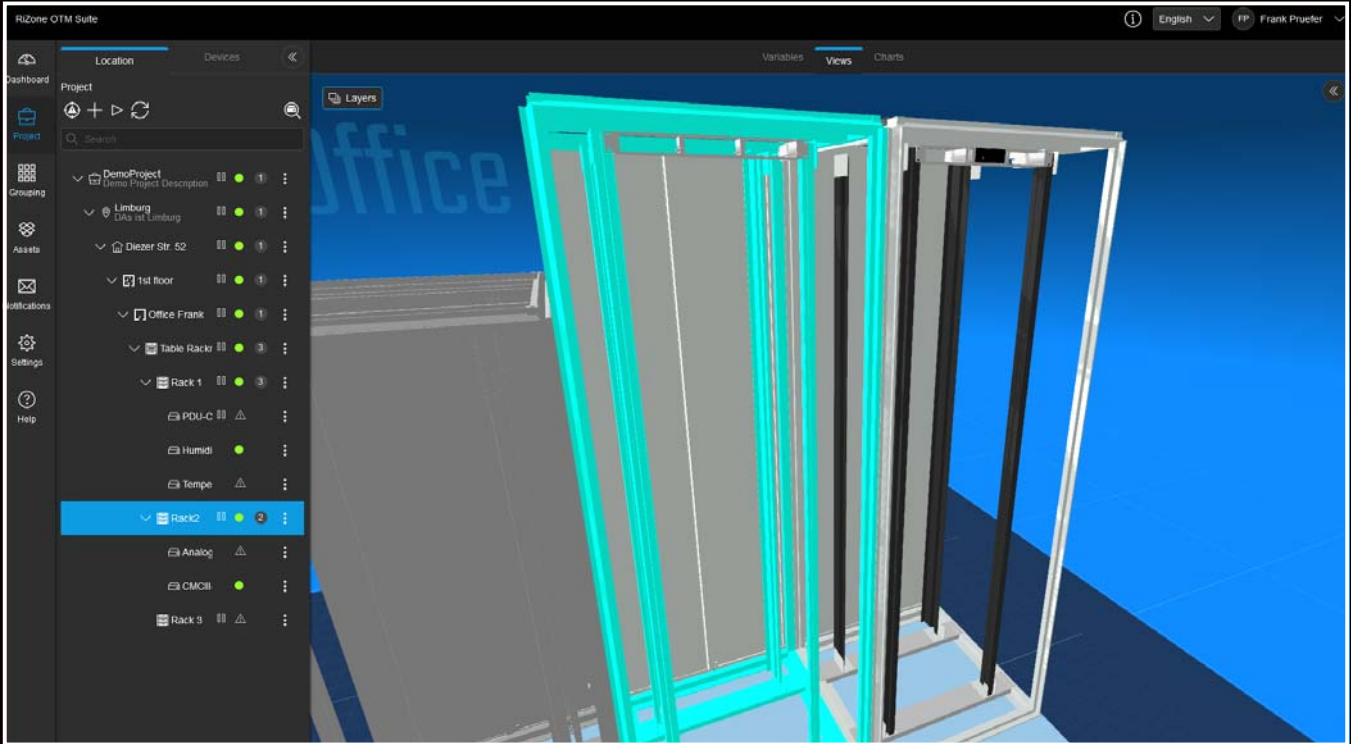
Integral energy efficiency calculator:

- Energy efficiency calculator for individual climate zones
- Calculate the carbon footprint of your climate control system, from delivery through to operation
- Information about F-gases / Global Warming Potential (GWP)

Comprehensive documentation:

- Standard-compliant heat dissipation record
- All required product information is provided
- Display your product lifecycle status with reference to successor products

RiZone



The data centre is the beating pulse of the digital era, but energy demands have rapidly escalated and are now a significant cost factor. The RiZone OTM Suite ensures optimised management of the OT layer and allows detailed monitoring of physical IT systems. RiZone responds to the challenges facing data centres today with a clear focus on availability, safety and optimised energy consumption.

The solution not only creates transparency but also helps identify previously untapped potential savings. As a result, the rapid escalation in energy demand associated with digitalisation and the growth in data traffic becomes more manageable. RiZone is transforming the rules of play in data centres and paving the way for a sustainable, energy-efficient future.

New: The REM energy monitoring solution

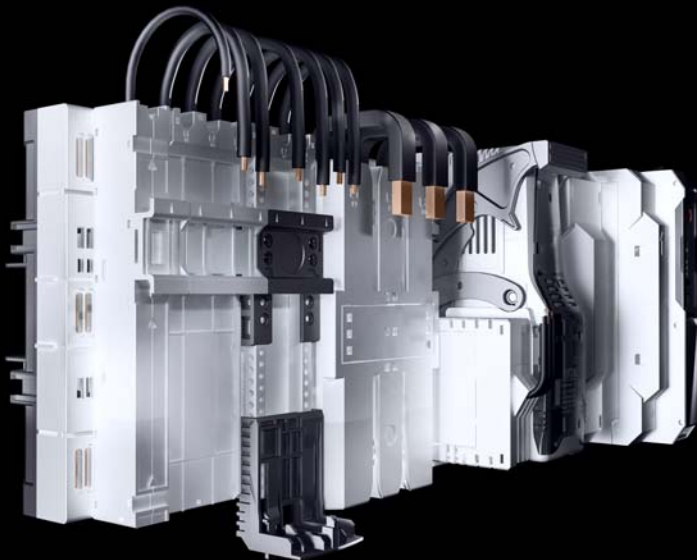
Rittal's latest energy monitoring solutions allow you to evaluate, visualise and compare energy consumption levels inside the enclosure. The integral alarm and workflow management system offers a simple, reliable tool for optimising your energy consumption. All energy consumption levels are administered centrally from the RiZone software solution.



More about RiZone
can be found here:

www.rittal.com/RiZone

RiLine Compact



RiLine Compact – The benefit lies in the system

The compact, modular busbar system for power distribution in small and medium-sized control systems with all-round shock-hazard-protected board technology.

**New: Longer boards
for larger applications!**



More about RiLine Compact
can be found here:

www.rittal.com/RiLine-Compact

VX25 Ri4Power 185 Compact



VX25 Ri4Power 185 Compact

The new 185 Compact adaptor makes the RiLine Compact device family accessible to the Ri4Power system, so that even small amperages of 16 A to 160 A may be installed.

Benefits:

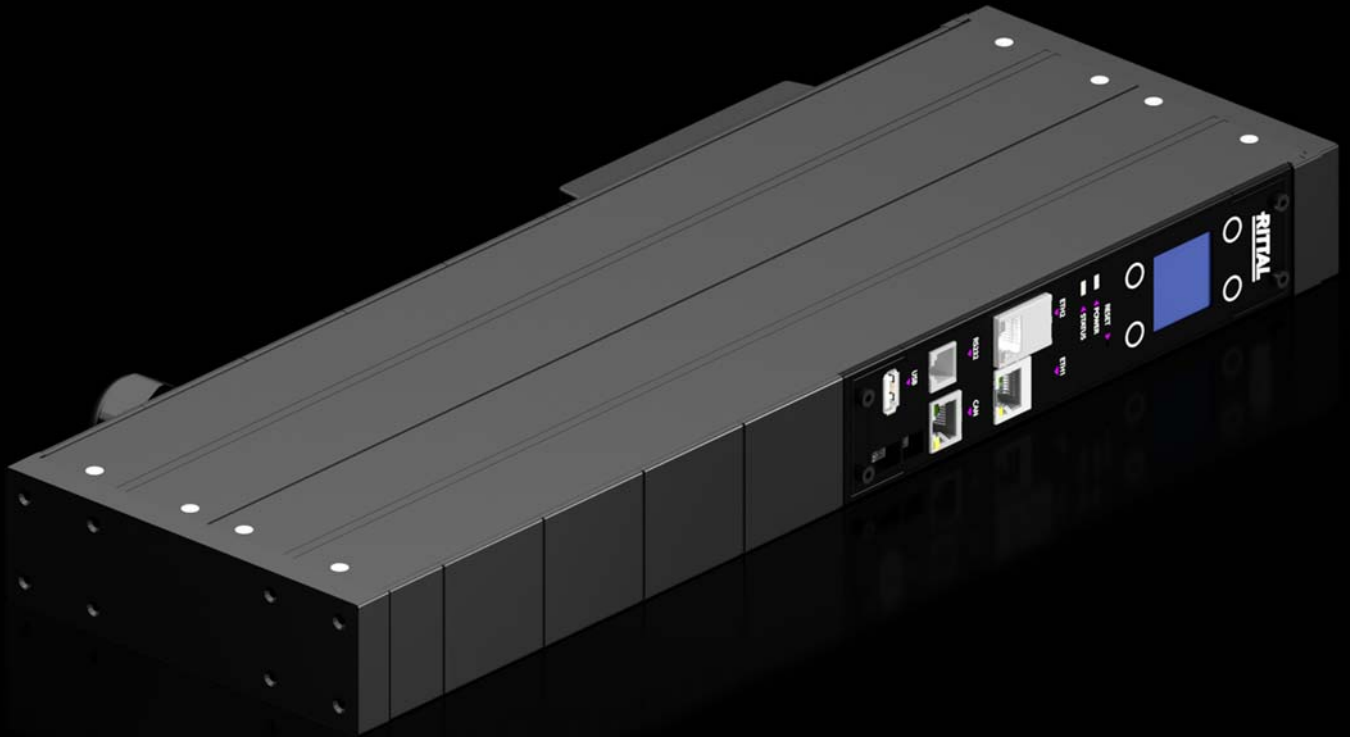
- Simple assembly and wiring of the RiLine Compact system on the Ri4Power 185 Compact system
- A diverse range of adaptor options for small amperages in the Ri4Power system



More about Ri4Power
can be found here:

www.rittal.com/Adaptor

CMC III PU 19" edition



The new CMC III PU 19" edition in conjunction with our RiZone OTM Suite software solution acts as a central monitoring unit for the entire OT layer. With up to 16 sensors, the Power Unit collates data from the IT system enclosure and raises the alarm if defined limits are exceeded.

The 482.6 mm (19") format means easier installation in the IT enclosure because no further accessories are required. What's more, the power pack is directly integrated, so the CMC III PU 19" edition is ready to use immediately.



More about the CMC III PU 19" edition can be found here:

www.rittal.com/CMC-III

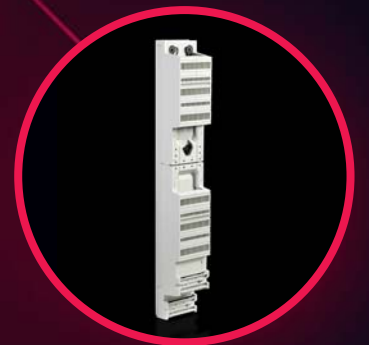
Power distribution and IT innovations



Further information
can be found at:
www.rittal.com/Innovations-energy



Go online!



Blue e+ fan-and-filter units with EC technology

Revolutionary, IoT-compatible fan-&-filter units – Superior performance, sustainability & reliability



Enter the future of fan-and-filter technology with Blue e+ fan-and-filter units. As well as pioneering IoT-compatibility, they also boast outstanding filter performance with innovative pleated filter accessories. These fan-and-filter units will unlock a host of benefits – from energy efficiency, to superior monitoring and sustainability, through to higher air throughputs. Rittal boasts the most powerful, sustainable and safest fan-and-filter unit on the market.

- Maximum air throughput with a pleated filter
- Easy filter changes, thanks to a new opening mechanism on the louvred grille
- Faster installation on the enclosure with optimised detent hooks
- IoT link including new filters (automatic filter cleaning, filter maintenance display, emergency cooling function)
- Multi-voltage capability 100 – 240 V
- The fan-and-filter portfolio includes the variants AC/DC, EC and EMC



Discover more about our efficiency and service check on page 23!



More about our new cooling solutions can be found here:

www.rittal.com/innovations-cooling

Air diverter

For Blue e+ cooling
units 1.0 – 5.8 kW



Cold air from cooling units is now distributed even more optimally inside the enclosure with the new air diverter for Blue e+ cooling units 1.0 to 5.8 kW.



Learn more about
the Scan & Service app
on page 22!



More about air diverters
can be found here:

www.rittal.com/air-diverter

Liquid Cooling Unit – LCU CW



The LCU CW unites the efficiency of an air/water heat exchanger with powerful DC fans and a network-compatible controller. It is effortlessly integrated into existing cold water circuits.

This versatile device not only ensures continuous temperature control but also adapts flexibly to different environments.



Learn more about the Scan & Service app on page 22!



More about Liquid Cooling Units – LCU CW can be found here:

[www.rittal.com/
Liquid-Cooling-Units](http://www.rittal.com/Liquid-Cooling-Units)

Liquid Cooling Packages



Our new LCP CW generation with maximum cooling output and a new controller features two Ethernet interfaces.

Sensors continuously measure thermal and electrical output, thus ensuring straightforward monitoring in the RiZone OT Suite.

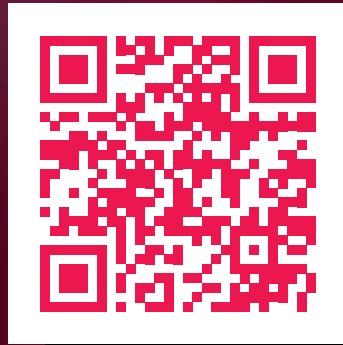


More about Liquid Cooling Packages can be found here:

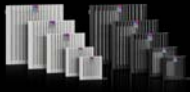
[www.rittal.com/
Liquid-Cooling-Packages](http://www.rittal.com/Liquid-Cooling-Packages)

Cooling innovations

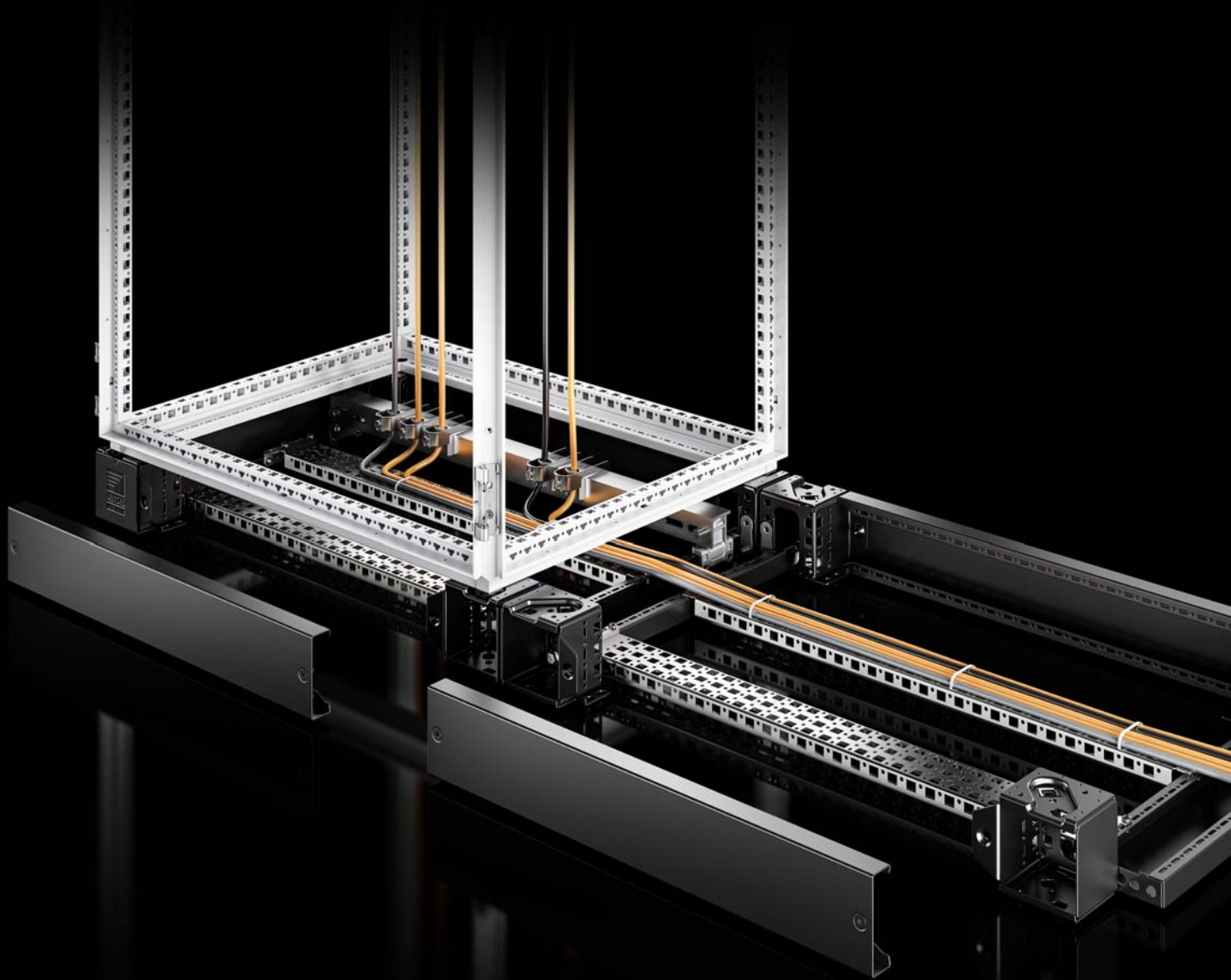
Further information
can be found here:
www.rittal.com/Innovations-cooling



Go online!



Base/plinth system VX



More benefits when using the new base/plinth system VX

The new functional corner pieces with front and rear trim panels ensure individual, user-friendly assembly of the base/plinth system. Accessory parts are now even easier to integrate.

Side trim panels are fitted via the connecting plate, optionally from the inside or outside, to ensure a secure connection and create brand new installation opportunities.

- Simple: Time-saving assembly
- Flexible: Individually configurable with VX25 accessories
- Reliable: Maximum stability of the base/plinth, providing static support for a fully configured enclosure with up to 15,000 N
- Seamlessly bayable



More about the base/plinth system VX can be found here:

www.rittal.com/vx_base-plinth

AX and KX in stainless steel



Small and compact enclosures KX and AX in stainless steel are suitable for use with a wide range of small and medium control applications. A comprehensive range of accessories can be installed in the enclosures without the need for machining. The flat design of the enclosure edge folds achieves a high protection category.

Your machine and system documentation is always up-to-date, thanks to the Rittal ePOCKET digital wiring plan pocket.



More about AX compact enclosures can be found here:

[www.rittal.com/
AX_compact_enclosures](http://www.rittal.com/AX_compact_enclosures)



More about KX small enclosures can be found here:

[www.rittal.com/
KX_small_enclosures](http://www.rittal.com/KX_small_enclosures)

Toptec outdoor enclosure



The bayable CS Toptec translates the tried-and-trusted baying concept of Rittal large enclosures into the twin-walled outdoor enclosure system.

With an extended range of sizes for enclosures up to 2000 mm high and direct installation options for Blue e+ outdoor cooling units, the Toptec is ideal for use in a wide range of outdoor applications.

Benefits:

- Side panels and baying kit selectable as accessories depending on the application
- Interior installation with the Rittal modular system



More about Toptec outdoor enclosures can be found here:

www.rittal.com/Toptec

Hygienic Design system enclosures



Save time cleaning – Hygienic Design system enclosures from Rittal

Rittal's large enclosures are now available in Hygienic Design as standard.

The frame section with VX pitch pattern means you benefit from the full range of potential applications with system accessories, plus shorter delivery times.



More about Hygienic Design large enclosures can be found here:

[www.rittal.com/
HD_large_enclosure](http://www.rittal.com/HD_large_enclosure)

Plastic Ex enclosures AX



Certified safe – The new plastic Ex enclosures AX for hazard zones

The new plastic Ex enclosures AX are certified for explosion-prone outdoor areas and are available in eight new sizes for a wide range of applications.

As well as approvals to IEC Ex and ATEX, the new plastic Ex enclosures AX also satisfy the UL HazLoc approval. The robust material is ideal for outdoor use and the flexible interior installation options make it suitable for use in a versatile range of applications.



More about Ex enclosures can be found here:

[www.rittal.com/
Ex-enclosures](http://www.rittal.com/Ex-enclosures)

TX CableNet



The second-generation TX CableNet now offers even more flexibility

The new roof structure provides even more effective protection from dust for your IT infrastructure. Optionally, individual roof segments may be removed for cable entry via the roof or when using a fan. Finish off the network enclosure to suit your application with our cable cage, AX comfort handle and other Rittal IT system accessories, for load capacities of up to 500 kg. All available off the shelf.



More about the TX CableNet can be found here:

www.rittal.com/TX-CableNet-rack

VX SE free-standing enclosure system



Enclosure system VX SE – Now available in even more sizes

Four new sizes have been added to the options for individual switchgear assembly.



More about the VX SE can be found here:

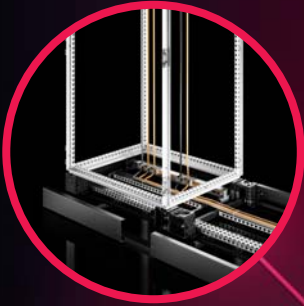
www.rittal.com/VX-SE_freestanding_enclosure_system

Enclosure innovations

Further information
can be found here:
www.rittal.com/Innovations-industry



Go online!



Overview of our services

Sustainability and energy efficiency are among the biggest challenges facing industrial companies today. This requires careful analysis of every aspect, from small pieces of equipment through to large-scale production machines.

The demands on plant availability are increasing, as the pressure on costs and resources continues to rise. Now more than ever, it is vital to continuously modernise and maintain your production equipment and keep it in optimum condition. The Rittal service team is on hand to support you with a comprehensive range of one-stop services, short response times, and qualified service engineers offering in-depth product and system knowledge.



More about Rittal Services can be found here:

www.rittal.com/Services-overview



Global service network

Wherever your cooling unit is located, we are on hand to assist. You can rely on consistent quality with our global service network. Our hotline is always available to provide fast, uncomplicated assistance. Replacement units and servicing are provided by our network of local service engineers.



Scan & Service app

Want to configure your climate control devices quickly and easily? With our Scan & Service app, you can. The NFC scan provides a quick overview of the climate control unit and its status. You can also scan any other Rittal product from its rating plate. See at a glance which extensions and spare parts are available for your product and contact us directly via our Scan & Service app. Already registered your product? Do this with the app and get your extended warranty!



Efficiency and service check
The world's most efficient cooling units. Use our efficiency and service check! We will take an inventory for you and show you how much you could save using transparent energy analyses – better for the environment and for your wallet.



Modular maintenance agreements
How quickly can you access support? How often should your devices be serviced? How available is your spare part? Your choice – our task! Choose from a range of options and decide which individual maintenance agreement best suits your needs.

Rittal – The System.

Faster – better – everywhere.

- Enclosures
- Power Distribution
- Climate Control
- IT Infrastructure
- Software & Services

You can find the contact details of all Rittal companies throughout the world here.



www.rittal.com/contact

XWWW00266EN2310

ENCLOSURES

POWER DISTRIBUTION

CLIMATE CONTROL

IT INFRASTRUCTURE

SOFTWARE & SERVICES



FRIEDHELM LOH GROUP