



**PHOENIX
MECANO**

PROVIDING SOLUTIONS





From our subsidiary in Deinze, we supply and process products from **Rose, Bopla, Kundisch, RK Rose + Krieger, Setago RK-AHT, PTR Hartmann** and **Hartmann Electronic**.

As a specialised partner focusing constantly on innovation, we develop concepts with and for our customers. We believe that an intensive exchange of ideas based on close cooperation is the key to successful projects.

Phoenix Mecano employs specialists who have decades of experience behind them. We put our know-how and extensive product range to good use, jointly developing applications that meet the strictest requirements in terms of technology, quality, service and focus on customers.

PHOENIX MECANO nv

Phoenix Macano nv, established in 1991, is part of the Swiss Phoenix Mecano Group AG and offers solutions in three areas:

- ▼ Standard, customised or custom made enclosures
- ▼ Mechanical components and constructions
- ▼ Electronic components

INDUSTRIAL COMPONENTS MECHANICS

We offer a wide range of mechanical components: aluminium profiles, connection technology, linear units, lifting columns, electric cylinders and ergonomic workstations.

You can also rely on us to come up with an integrated solution for you. So, if you have an idea or concept, our engineering team will be happy to work with you on developing it.



ENCLOSURE SYSTEMS

Our range of enclosures includes units made from synthetic material, aluminium or stainless steel. For a specific degree of protection, we offer solutions from IP20 to IP69K. In areas where there is a risk of explosion, we have our ATEX-certified product range to offer.

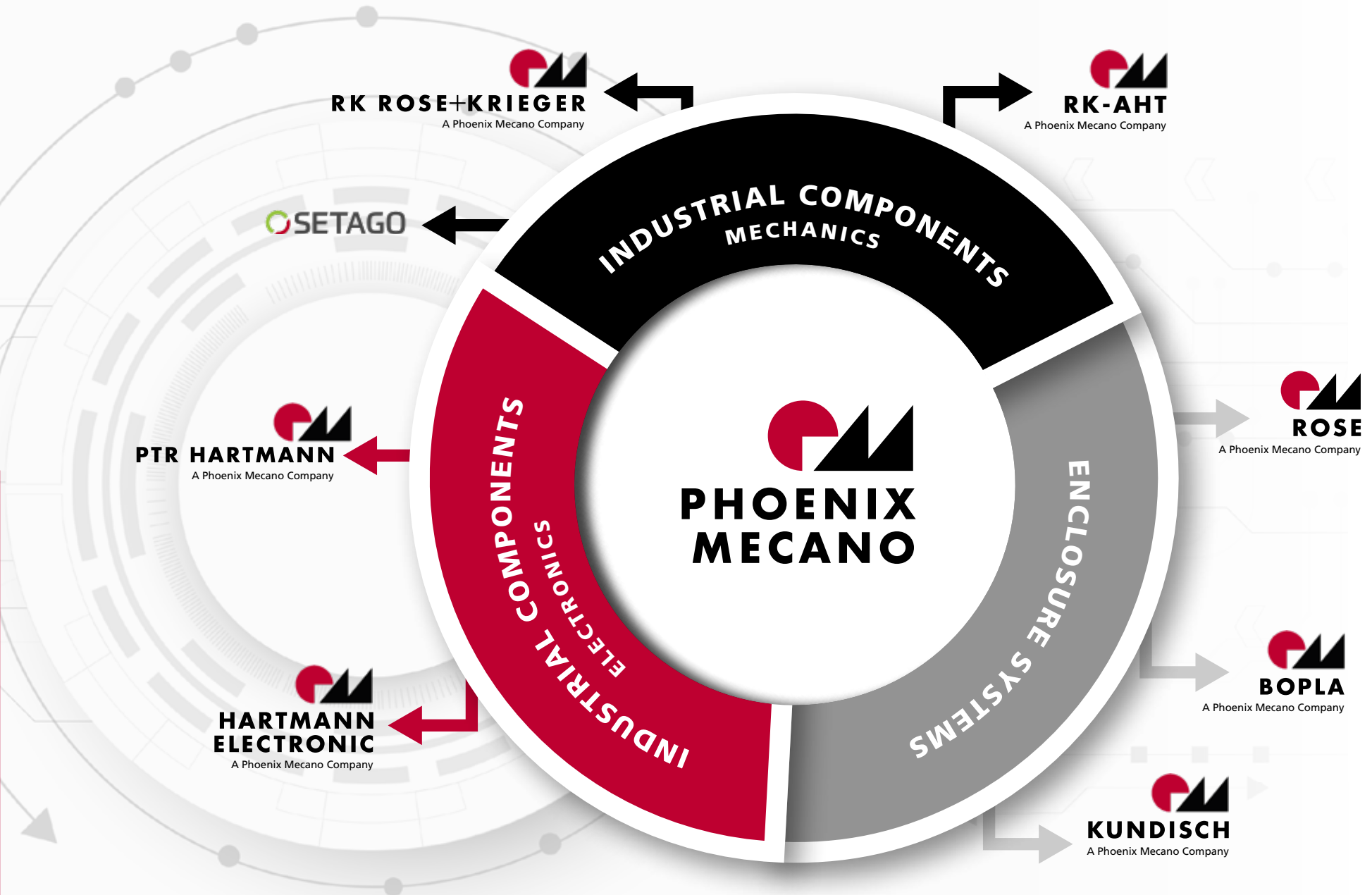
We are also your partner for the production and assembly of customer-specific enclosures. We carry out a variety of operations, such as milling, drilling and mounting, as well as engraving, printing, painting and galvanising. You can also ask us to carry out specific surface treatments for EMC coating and salt resistance.



INDUSTRIAL COMPONENTS ELECTRONICS

Our standard offering of electronic components includes PCB connectors, test pins, coils, transformers, terminals and backplanes.

We tailor these products to include terminal printing, customer-specific test pins and more.



RK ROSE+KRIEGER
A Phoenix Mecano Company

RK-AHT
A Phoenix Mecano Company

OSETAGO

**INDUSTRIAL COMPONENTS
MECHANICS**

PTR HARTMANN
A Phoenix Mecano Company

ROSE
A Phoenix Mecano Company

**PHOENIX
MECANO**

**INDUSTRIAL COMPONENTS
ELECTRONICS**

ENCLOSURE SYSTEMS

**HARTMANN
ELECTRONIC**
A Phoenix Mecano Company

BOPLA
A Phoenix Mecano Company

KUNDISCH
A Phoenix Mecano Company





INDUSTRIAL ENCLOSURES

With their universal design, ROSE industrial enclosures are suitable for the installation of mechanical, electronic and electrical components.

ROSE products are of outstanding quality and will protect your systems and equipment – even in the most aggressive and demanding environments. Enclosures are available in aluminium, stainless steel, polyester, polycarbonate, ABS, thermoplastic PS and polyamide.

There are various areas of application: fixed or portable, 19", screen and keyboard integration, etc. You'll find our solutions in market segments such as machine building, transportation, energy technology, automation, measurement and control technology, food & beverage, chemical & petrochemical industry and sheltered workshops.

Specific materials and dimensions or prototypes can be produced quickly in small production runs on demand. On request, we will supply enclosures in special colours or leave them unpainted. Other operations, such as milling and laser engraving, etc. and assembling components in equipped enclosures are also possible. We will be happy to advise and support you in your projects from the development phase onwards.





ATEX ENCLOSURES

With ROSE Ex products, we offer specific solutions for hazardous environments, such as gas and dust explosive zones. The junction boxes, control stations and components are available in aluminium, polyester and stainless steel.

Our workshop in Deinze is ATEX-certified and we can supply you with a complete system that meets the latest ATEX and IECEx rules with only a short lead-time required.

The products are used for protection against gas explosion in zones 1 and 2 and for protection against dust in zones 21 and 22.

We hold certificates in the following classes:

- Ex e: increased safety
- Ex i: intrinsic safety
- Ex d: flameproof enclosure
- Ex t: protection through enclosure

We also supply Ex accessories such as cable glands, push-buttons and blind plugs.









HUMAN MACHINE INTERFACES INDUSTRY

For ROSE HMI applications, we supply both suspension systems and commanders in aluminium and stainless steel in various shapes. In doing so, we pay particular attention to ergonomics, design and stability. Our suspension systems are either fixed or height-adjustable, giving you the choice of different types, depending on the application, length and weight of the screen.

The commander is customised, based on the screen used, the buttons required and any additional controls.

The GTV light series focuses on light and compact screens with a weight of 5 to 25kg.

The GTV 2.0 series is suitable for heavier loads of 20 to 60kg.





INDUSTRIAL PCs AND TABLETS

Fully developed solutions, with screen and industrial PC integration, make the the ROSE HMI range complete.

We configure these screens and industrial PCs according to your wishes. Our devices can be used either fixed (e.g. on a supporting arm or post) or as a portable device (industrial tablet) and finished in aluminium or stainless steel. Various screens are ATEX-approved for hazardous environments.

Consistent design plays a leading role in our total solution. If you are looking to achieve the most ergonomic solution that can be incorporated seamlessly into production environment, then your best option is customisation.

We also produce industrial PCs and tablets that are suitable for the food and beverage industry and come with the necessary certificates and sealing gasket. They are being operated through buttons, whether or not in combination with a touchscreen (resistive or capacitive).









ENCLOSURES FOR ELECTRONICS

BOPLA enclosures protect your electronic components against dust, moisture and damage. And with our wide range of accessories, we can convert a standard enclosure into a beautifully finished solution that fits in with your corporate identity.

Our products are suitable for a whole range of applications: hand, table, console and wall enclosures, with a choice of aluminium or synthetic material.

Thanks to our experience and knowledge in measurement and control technology, telecommunications, medical technology, manufacturing industry, etc. we are able to supply you with a total solution.

We can supply this enclosure as standard, customised or totally custom made.

We can also provide these enclosures with EMC protection, depending on the application.





HUMAN MACHINE INTERFACES ELECTRONIC

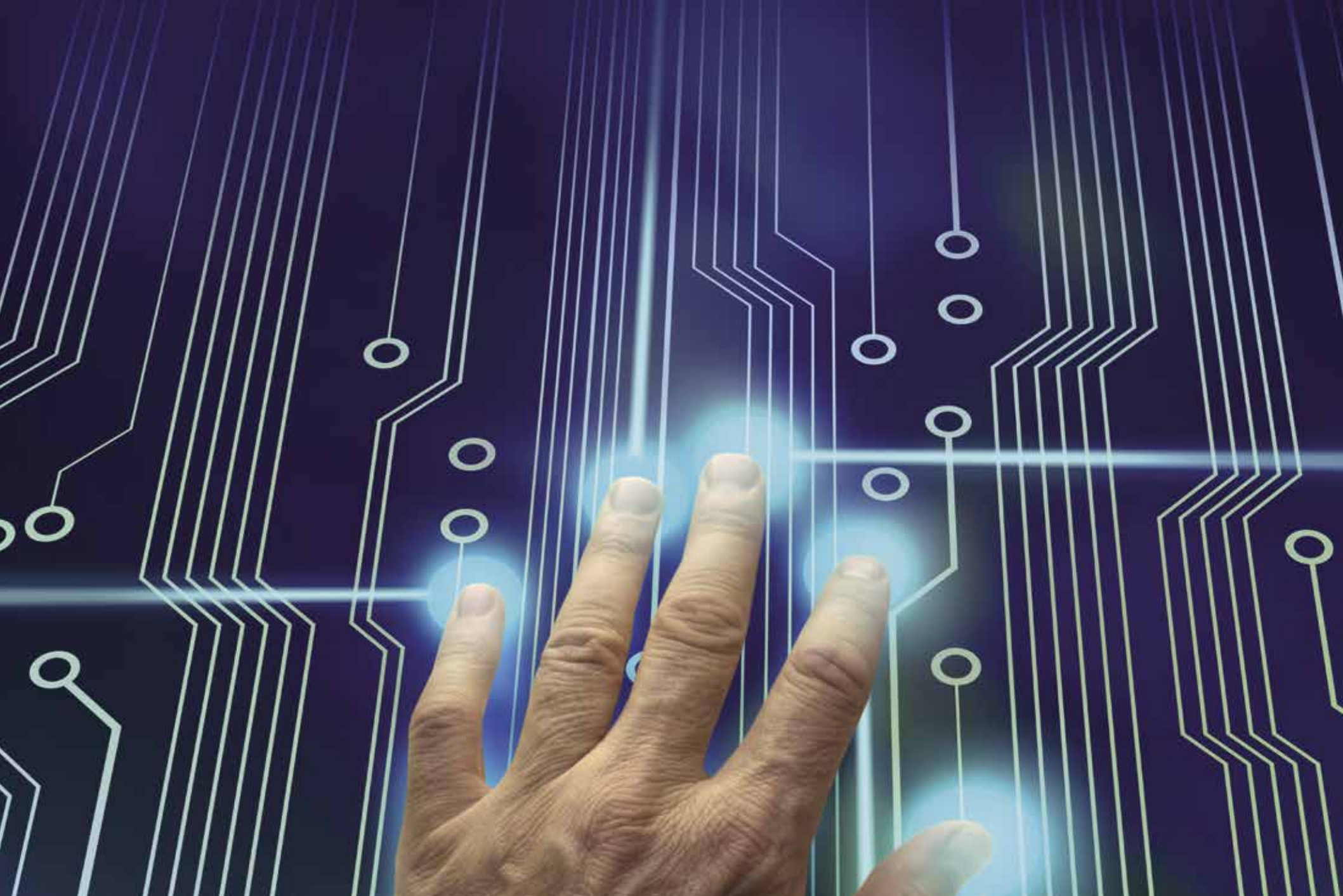
With the BOPLA HMI range, we can incorporate a keypad, foil or touchscreen in an enclosure selected by you. This can be standard or developed just as easily to be totally customised or adapted to your project.

You select a touchscreen or develop one with us. Once we have decided on the correct type of touchscreen, we print the glass plate to finish it off. Digital printing also enables us to produce even the most complex logos.

Our HMI solutions are used in a variety of market segments: automotive, public transport, the medical world, IoT, etc.

The keypads can be used in the most aggressive environments thanks to a special coating.









19" RACKS

The BOPLA19" range consists of slide-in enclosures, table enclosures and enclosures for the installation of 19" module carriers (metal and synthetic material). The portfolio has various construction forms, dimensions and accessories. The 19" enclosures can be configured on demand..

There are also versions with EMC shielding. You can count on us for complete guidance, all the way from prototype to production run.

Our 19" applications are used in market segments such as measurement and control technology, public transport, automotive, data communication and IT.





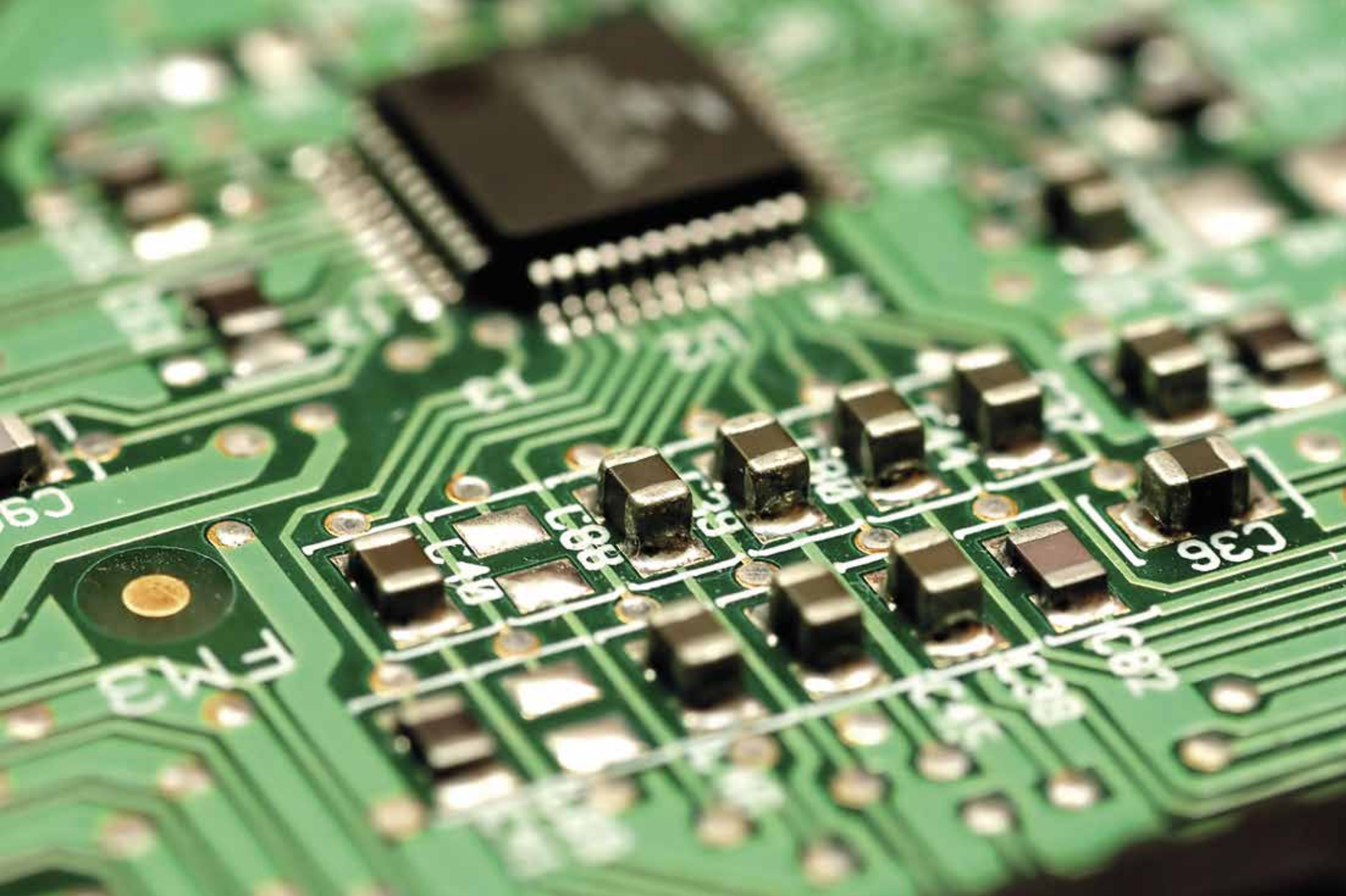
ELECTRONIC COMPONENTS

PTR HARTMANN offers an extremely wide range of electronic components. You can come to us for PCB terminals, PCB connectors, test pins, interface contacts, serial terminals and coils.

In addition to the standard range, we also develop customised items. If you want a test pin to a specific length, a connector with your own imprint, etc. our team will develop it for you.

There's a huge range of possible applications: assembling PCBs, connecting and testing printed circuit boards, HF filtering and more.









MECHANICAL APPLICATIONS STATIC

The RK ROSE + KRIEGER range is modular and can be adapted or expanded easily. To do this, we supply products as separate components (profiles, clamps, tube connectors) or as mechanical structures that are assembled in our own workshop (stairs, work platforms, safety guards, mechanical structures, etc.).

Aluminium structural profiles are extremely versatile and robust. The functional finishing profiles enhance the aesthetic possibilities, while the heavy-duty profiles can be used for very heavy loads. Profile sizes range from 20x20 mm to 160x320 mm.

The tube connectors are available in aluminium, synthetic material or stainless steel. They can be used in production environments where connections are required without welding or drilling. The ITAS system also facilitates installation, from simple stair handrails to complex stairs and platforms.





MECHANICAL APPLICATIONS DYNAMIC

For guiding, adjusting or positioning, RK ROSE + KRIEGER has a wide range of linear units.

These range from occasional movements that are usually carried out manually, to highly dynamic positioning, with or without servomotor.

Depending on your requirements in terms of speed, acceleration, load and precision, the unit can be fitted with a trapezoidal spindle, ball screw spindle, toothed belt or bar.

We stand out from comparable products in terms of speed and accuracy, with a maximum speed of up to 10 metres per second and a very high precision of up to 0.023 mm.

From the very beginning and throughout the development of your project, you can rely totally on our engineering team to implement the best possible solution.

We also supply a wide range of lifting columns, with stroke lengths of 50 to 3.000 mm, suitable for loads of 800 to 12.000N. Speeds can vary from 7 to 250 mm per second. Lifting columns can also be custom-made and have the benefit that the shaft and drive are in the same housing.









ERGONOMIC WORKSTATIONS

We'll work with you to design workstations that are equipped ideally to fit in with your processes, with great attention for ergonomics and Lean workflows.

In addition to standard workstations and height-adjustable workbenches, we can also integrate control systems such as **Setago Pick2Light**, **Smart Klaus** and **Poka Yoke**.

This enables us to increase efficiency and limit production downtime to a minimum.

Setago Pick2Light is a picking and control system for assembly tasks.

The Smart Klaus system monitors your assembly actions with a camera, carrying out checks and making adjustments, if necessary.

Poka Yoke ensures that only the correct action can be performed by opening the correct location. A scanning system is used for input and output and to ensure that the correct hatch is opened or closed each time.

Contact us for a preparatory study.





ELECTRIC CYLINDERS

You can also count on us for compact, low-maintenance electric cylinders that offer greater precision than pneumatic or hydraulic systems.

These are available with strokes of 50 to 2.000 mm and for loads ranging from 50 to 25.000N.

The housings of our electric cylinders are robust and can be supplied in aluminium or synthetic material.

They are also easy to incorporate into existing systems and are controlled by a PLC or hand unit.

Some cylinders are available with an IP69K level of protection. These devices come in 12-24V DC or 230-400V AC.



SERVICE

Phoenix Mecano nv is your partner for both standard components and complete solutions.

And you'll appreciate our strong customer-oriented approach at every step of your project.

Based on what you want, we'll take care of:

- **Engineering and project support:** from initial idea and design, through to the final result.
- **Customisation:** painting, laser-engraving, digital printing, pad printing, etc.
- **Mechanical work:** milling, drilling, sawing, tapping.
- **Assembly:** cable glands, terminal blocks, switchgear, wiring, displays, keypads, etc.
- **Construction:** mechanical structures.



CONTACT

The Phoenix Mecano team is looking forward to working with you to analyse, develop and implement your project.
Find out about our service and make an appointment.

T. +32 9 220 70 50 | info.pmb@pmk.be | www.phoenix-mecano.be





PHOENIX MECANO

Phoenix Mecano nv

Karrewegstraat 124 | 9800 Deinze | Belgium

T. +32 9 220 70 50

info.pmb@pmk.be

www.phoenix-mecano.be