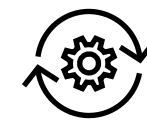


NEW ITEMS 2023

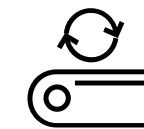
THE HIGHLIGHTS



item Suspended Conveyor System – supplying materials more efficiently



LED signalling – intelligently indicating operating status



item railing system – more control and adjustability for goods transport

Even more new products for the item Building Kit System



Conveyor Rail Profile
0.0.712.90

Fastening Bracket T1
0.0.715.28

Fastening Bracket
0.0.715.27

Insertion Guide ESD
0.0.716.11

Carriage ESD
0.0.715.67

End Stop ESD
0.0.716.12

Efficient material supply with the item Suspended Conveyor System



When parts take up a lot of space in a small load carrier or can easily become caught up together, the item Suspended Conveyor System offers an ingenious alternative solution. Cable harnesses or mats can be hung up or placed in bags so they can be efficiently moved around for further processing.

The ESD-safe Carriages travel to their removal point along a Conveyor Rail Profile that has a slight gradient. The Carriages are moved by gravity alone and balance out any swaying motion.

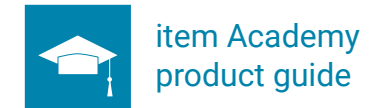
The Conveyor Rail Profile is integrated into transport trolleys or racks built using Profile Tube System D30 and can be fitted at any height.

The item Suspended Conveyor System in detail

Automatic forwarding with a slight incline

A gradient of just 3° is all that is needed to ensure suspended goods travel from end to end under their own weight alone. This is made possible by a Conveyor Rail Profile and specially designed Carriage that counteracts canting and self-locking.

Conveyor Rail Profile 6 can be ordered in lengths up to 6000 mm. It features three open Line 6 grooves on the top for fastening it to the cross profiles on a frame with Fastening Brackets 6 D30.



Conveyor Rail Profile 6 30x30-80
[0.0.712.90](#)

Track, guide and fixing all integrated into one profile:

- Strong and light
- Secure guidance from central web
- Four Line 6 grooves for attachments
- ESD-safe

Note:

Depending on the length and load of the profile, additional suspension points may be advisable

Insertion Guide 6 30x30-80 ESD
[0.0.716.11](#)

An ergonomic starting point for Carriages:

- Guide ensures Carriages slot securely onto the conveyor rail
- Edge protection for Conveyor Rail Profile
- ESD-safe

End Stop 6 30x30-80 ESD
[0.0.716.12](#)

Simple removal of carriages with no back pressure:

- Stop that holds Carriages on the rail
- Space for two Carriages
- Easy removal of Carriages
- ESD-safe

Fastening Bracket 6 30 D30
[0.0.715.27](#)

Reliable connection to Conveyor Rail Profile:

- For attaching the ends of the conveyor rail to a frame
- Fastens to a (Profile) Tube D30
- Flat, space-saving fixing
- Load-carrying capacity up to 50 kg

Fastening Bracket 6 30 D30 T1
[0.0.715.28](#)

Supplementary suspension fixing for Conveyor Rail Profile:

- Use dependent on length and load
- Enables construction of protruding conveyor rail ends
- Fastens to a (Profile) Tube D30
- Load-carrying capacity up to 50 kg

Carriage D37-32 ESD
[0.0.715.67](#)

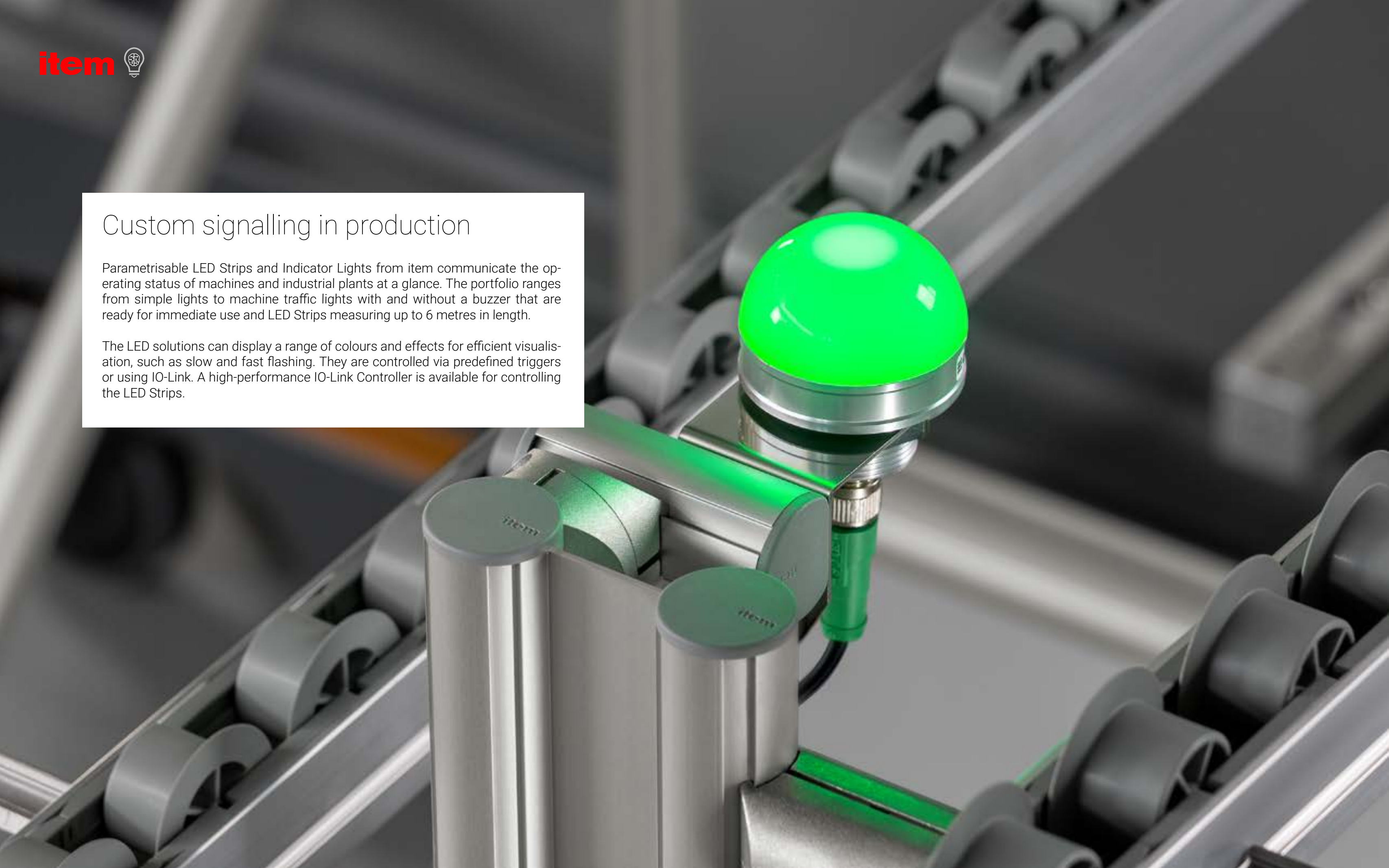
Reliable travel at a gradient of just 3°:

- Load-carrying capacity up to 5 kg
- Fully enclosed roller elements
- Integral stop limits swaying motions
- Reliable lateral guidance from rollers
- Integrated space for labels such as QR codes

Custom signalling in production

Parametrisable LED Strips and Indicator Lights from item communicate the operating status of machines and industrial plants at a glance. The portfolio ranges from simple lights to machine traffic lights with and without a buzzer that are ready for immediate use and LED Strips measuring up to 6 metres in length.

The LED solutions can display a range of colours and effects for efficient visualisation, such as slow and fast flashing. They are controlled via predefined triggers or using IO-Link. A high-performance IO-Link Controller is available for controlling the LED Strips.



Customised solutions up to 6 metres in length

Designed for industrial use, LED Strips from item get signalling mechanisms in the groove. Depending on how they are implemented, the bright LED Strips can be lit up in one solid colour from end to end or varied segment by segment – in lengths from a few centimetres to several metres. This makes it possible to achieve outstanding visibility and create innovative utilisation concepts.

The IO-Link Controller from item can be used to achieve custom control, so you can very easily incorporate signalling into your plant management concepts. Detailed information on creating signalling solutions as part of an overall production management system can be found in the item Online Shop and the item Academy.



Multi-Segment RGB LED Strip Controller IO-Link 24V DC [0.0.721.35](#)

Industrial control for LED Strips:

- Three M12 connections
- Custom parametrisation via IO-Link
- Four predefined operating modes – segment display, countdown, fill level, highlight
- Secure fixing in the groove



Multi-Segment RGB LED Strip [0.0.719.69](#)

Solid lighting strip comprised of numerous, individually controllable LED segments:

- Available in four lengths up to 6 metres
- Can be cut to size in 17-mm sections
- Fastened along the groove using LED Casing Profile 8 ([0.0.718.15](#))
- Controlled using Multi-Segment RGB LED Strip Controller IO-Link 24V

Variants:

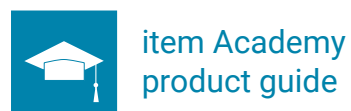
- 1 metre ([0.0.719.69](#))
- 2 metres ([0.0.720.85](#))
- 3 metres ([0.0.720.86](#))
- 6 metres ([0.0.720.87](#))



Plug-In Power Supply 24V 1A M12 [0.0.720.39](#)

Reliable power supply for Multi-Segment RGB LED Strip Controller IO-Link 24V:

- Suitable for 24V devices with an M12 connector
- Cable length 2000 mm





3-Segment RGB Indicator Light IO-Link with Buzzer
0.0.721.10

Bright indicator light with three individually controllable segments and a clearly audible warning tone:

- Suitable for immediate use as machine traffic light thanks to preset colour coding
- Integrated buzzer for additional acoustic warning
- Each LED segment can be freely parametrised via IO-Link
- Custom signalling utilising colours and functions such as flashing
- Includes mounting bracket and fixings

Variants:
With IO-Link (0.0.721.10)
Without IO-Link (0.0.721.12)



3-Segment RGB Indicator Light IO-Link
0.0.721.09

Bright indicator light with three individually controllable segments:

- Suitable for immediate use as machine traffic light thanks to preset colour coding
- Each LED Segment can be freely parametrised via IO Link
- Custom signalling utilising colours and functions such as flashing
- Sealed casing with IP 65 protection
- Includes mounting bracket and fixings

Variants:
With IO-Link (0.0.721.09)
Without IO-Link (0.0.721.11)



Multi-Segment RGB Light IO-Link 125
0.0.721.00

Ready-to-install indicator and status light with bright LED lighting area:

- Aluminium housing
- Available in three lengths
- The colour, brightness and lighting effects of individual LED segments can be freely set via IO-Link
- Predefined basic colours and flashing patterns can be used without IO-Link
- Fastening materials included

Variants:
Length 125 mm (0.0.721.00)
Length 250 mm (0.0.721.01)
Length 480 mm (0.0.721.02)



1-Segment RGB Indicator Light IO-Link
0.0.721.08

Robust, ready-to-install status light for production and logistics use:

- Sealed casing with IP 67 protection
- Freely settable colours and light functions via IO-Link
- Predefined colours and flashing patterns can be used
- Includes mounting bracket and fixings



Diffusor
0.0.720.76

Push-on diffuser panel for Multi-Segment RGB Light IO-Link:

- Spreads light evenly
- Protects lights from soiling

Variants:
Length 125 mm (0.0.720.76)
Length 250 mm (0.0.720.77)
Length 480 mm (0.0.720.78)

Profile 8 24x20 D30
0.0.719.20

Bracket J 80 D8
0.0.718.47
Bracket J 130 D8
0.0.719.21

Railing Holder 8 D8
0.0.718.49

Guide transported goods securely and with flexibility

The new item 8 D8 railing system gives you the design freedom you need to ensure you can guide goods of all types securely in any given scenario. Brackets with a wide pivot range make it possible to install side guidance inside or outside the conveyor line at the height of your choice. The conveyor sections can also be very precisely narrowed down towards a removal point.

Robust Profile 8 24x20 D30 serves as a railing. It features a specially optimised contour so you can guide transported goods either directly along its low-friction aluminium surface or clip on various slide strips for even gentler guidance.

Guide transported goods securely and with flexibility

Maximum freedom with just a few components

Railing system 8 D8 is based on a small number of basic components that can be combined in a variety of ways. Thanks to the wide pivot range of the Brackets, small load carriers and workpiece carriers that protrude outside the conveyor line can be guided just as well as individual products on the conveyor belt. Goods can also be funnelled and connections made with conveyor sections that branch off.

Perfectly integrated into the item Building Kit System

Thanks to the practical Railing Holder, side guidance can be fitted to various different conveyor sections. The solution is ideally compatible with the item Conveyor Belt System that features a Line 8 groove at the side. The railing system can also be used with other profiles by changing the T-Slot Nut.

Profile 8 24x20 D30 is designed in such a way that the railing can be fitted with tried-and-tested Slide Strip 5 ESD or Slide Strip D30. This further reduces the range of parts involved.



The product in use



item Academy product guide



Profile 8 24x20 D30
[0.0.719.20](#)

Special profile contour for the efficient construction of a railing:

- Compact aluminium profile with low coefficient of friction
- Special contour combines the features of the Line 5 profile groove and Profile Tube D30
- Line 8 groove on rear for connecting to Railing Holder 8 D8

Accessories:

Slide Strip 5 ESD ([0.0.437.15](#))
Slide Strip D30 ([0.0.634.59](#))



Bracket J 80 D8
[0.0.718.47](#)

Slender bracket for fastening a railing:

- Pivot range 80 mm
- Ensures railings can be arranged as required
- Allows for railing to be installed at different heights

Note:

The railing system (2 Brackets plus Railing Holders and Profile) can accommodate a load of 250 N. 2 Brackets should be used per metre. The maximum spacing between Brackets J 130 D8 is 500 mm. The maximum spacing between Brackets J 80 D8 is 750 mm.



Bracket J 130 D8
[0.0.719.21](#)

Wider Bracket for fastening a railing:

- Pivot range 130 mm
- Ensures railings can be arranged as required
- Allows for railing to be installed at different heights



Railing Holder 8 D8
[0.0.718.49](#)

Universal fastener for railing solutions:

- Space-saving holder
- Torsion-resistant fixing to frame and railing
- Dependable clamping effect on Brackets J D8
- Simple installation with one screw

Further new products in the item Building Kit System

High-quality telescopic rails for pull-outs and drawers



Telescopic Rail 12.7x45.7 soft close, full extension 0.0.718.71

- For custom under-bench drawer units or pull-out trays:
- Integrated damping system with soft-close function
 - Each pair of rails can support up to 45 kg
 - Suitable for fastening to Line 5, 6, 8 grooves and panels
 - Full length of rail can be used
 - Clips into closed position
 - Inner rails can be separated

Variants:

- Rail length 400 mm ([0.0.718.71](#))
- Rail length 500 mm ([0.0.719.70](#))
- Rail length 600 mm ([0.0.719.71](#))
- Rail length 700 mm ([0.0.719.72](#))



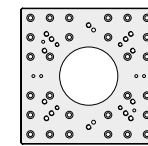
Telescopic Rail heavy duty 19.1x53.1 over extension 0.0.719.73

- Especially strong telescopic rails with extended pull-out length:
- Each pair of rails can support up to 140 kg
 - Suitable for fastening to Line 5, 6, 8 grooves and panels
 - Drawers can be pulled out beyond the frame
 - Clips into closed position

Variants:

- Rail length 500 mm ([0.0.719.73](#))
- Rail length 600 mm ([0.0.719.74](#))
- Rail length 700 mm ([0.0.719.75](#))
- Rail length 790 mm ([0.0.719.76](#))

Integrate robots securely into constructions



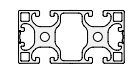
Robot Mounting Plate 8 280x280 0.0.709.45

- Secure fixing for cobots from Kuka and Universal Robots:
- Made of high-strength aluminium
 - Compatible with Kuka (LBR iisy and LBR iiwa series) and Universal Robots (UR20)
 - Pre-drilled pattern of holes
 - Mounting plates are available for many other models of cobot

Robot Mounting Plate	Art.-No.	ABB	Doosan	Fanuc	Kassow	KUKA	Omron	UR
	8 160x160 0.0.709.26	-	-	CRX-5iA	-	-	-	UR3e UR5e
	8 200x200 0.0.709.31	-	-	CRX-10iA CRX-10iA/L CRX-20iA/L	-	-	TM5 TM12 TM14 TM16 TM20	UR10e UR16e
	8 200x200 T1 0.0.719.07	-	A-Series M-Series	-	KR810 KR1018 KR1205 KR1410 KR1805	-	-	-
	8 240x200 0.0.715.06	CRB 1100 CRB 15000-5 IRB 14050	-	-	-	-	-	-
	8 280x280 0.0.709.45	-	-	-	-	LBR iiwa-Serie LBR iisy-Serie	-	UR20
Robot Mounting Plate	Art.-No.							
	8 160x160 0.0.709.54	Flange dimensions ≤ 160x160						
	8 200x200 0.0.709.32	Flange dimensions ≤ 200x200						

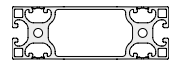
Further new products in the item Building Kit System

Components for walls and enclosures used in clean production



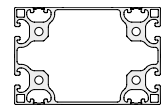
Profile X 8 80x40 2NO 180 light
0.0.715.70

- Universal construction profile in the modular dimension of Line X 8
- Ideal for building wall structures that are 80 mm deep
- Easy-to-clean, unbroken outer surfaces



Profile X 8 120x40 4NO 180 light
0.0.718.93

- Universal construction profile in the modular dimension of Line X 8
- Ideal for building sealed floors in clean production
- For walls that are 40 mm deep
- Easy-to-clean, unbroken outer surfaces



Profile X 8 120x80 4NO 180 light
0.0.718.94

- Universal construction profile in the modular dimension of Line X 8
- Ideal for building sealed floors in clean production
- For walls that are 80 mm deep
- Easy-to-clean, unbroken outer surfaces

The solution for retrofitting existing work benches with state-of-the-art item components

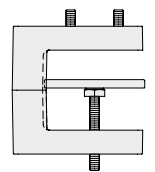


Table Clamp 8 80x40
0.0.716.76

- Fixing for connecting item work bench components to existing workstations:
- Machining-free fastening for Profiles 8 80x40
 - Stable clamp connection with table top
 - For retrofitting to existing work benches

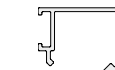


Fixing System, Rebate Profile X 8 80 2x4-5mm Al
0.0.719.88

- The item Fixing System for 80-mm-wide profiles
- Rebate Profiles for panel elements in various thicknesses
- Special panel fixing for double-skin walls

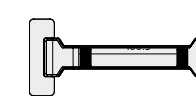


- Variants:**
- Panel thickness 4 - 5 mm (0.0.719.89)
 - Panel thickness 6 - 7 mm (0.0.719.91)



Fixing System, Rebate Profile X 8 40 6-7mm Al
0.0.719.90

New! The tool for quick and easy dismantling of the item Fixing System



Disassembly Tool, Fixing System
0.0.719.51

Used to dismantle components of the item Fixing System without damaging any parts:

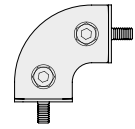
- Plastic lever tool
- Gentle removal of Angle Strip
- Simple separation of the Base Profile and Rebate Profile



item Academy
Tip

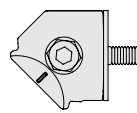
Further new products in the item Building Kit System

Innovative fasteners that get the job done faster



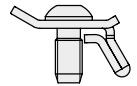
Butt Fastener D30-90° R25, internal, Connector M6-12
0.0.692.13

- Connects two Profiles 6 D30 at an angle of 90°
- Creates compact, rounded outer corners
- Smooth transition from the Fastener to the Profiles 6 D30
- Suitable as edge protection and insertion aid on conveyor lines



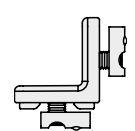
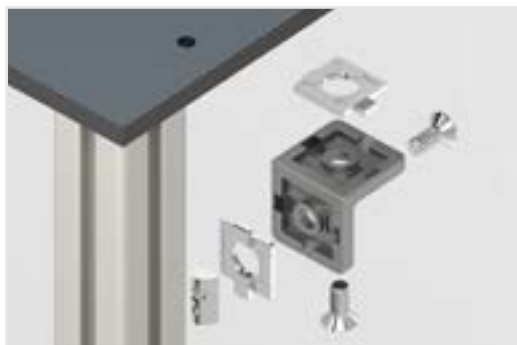
Fastener D30-45°, internal, Connector M6-12
0.0.692.12

- Connects Profiles 6 D30 or Profiles D40/D30 at angle of 45°
- For integrating additional rigidity into frames
- Can also be fitted to rectangular profiles



Standard-Fastening Set 6, one-sided
0.0.716.18

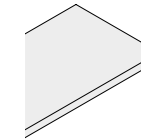
- Creates a high-strength, 90° connection between two Line 6 profiles
- One groove stays free to accommodate panel elements
- Asymmetrical connecting plate ensures anti-torsion alignment



Angle Bracket 2V 8 40
0.0.718.23

- Two rotatable inserts with anti-torsion features
- Supports right-angled and crossing profile connections without any machining
- Suitable for fastening panel elements to profiles

Robust plastic for table tops or partitions



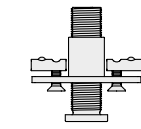
Plastic 4mm, anthracite
0.0.720.10

- Very high abrasion and impact resistance
- For panelling, table tops and partitions that are subjected to high stresses
- Resistant to high temperatures
- Available in many more colours

Variant:

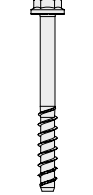
Thickness 10 mm (0.0.720.12)

Dependable floor fastening, even for clean production



Adjustable Foot 8 M20x40
0.0.719.15

- Extremely strong with stepless height adjustment
- Integrated flange for fastening to a Line 8 groove
- Fixed to floor with Screw Anchor ST 8x130
- Suitable for use in cleanroom solutions



Screw Anchor ST 8x130
0.0.720.66

- Floor fastening that does not require a dowel or other filler materials
- ETA approval for cracked and uncracked concrete

item

item Industrietechnik GmbH
Friedenstrasse 107- 109
42699 Solingen
Germany
Phone +49 212 6580 0
info@item24.com
item24.com

item. Your ideas are worth it.®

About item

item Industrietechnik GmbH is a midsize company dedicated to the development and worldwide sale of high-quality components used to build fixtures, machinery and plants as well as system solutions for lean production operations and work bench design. item building kit systems are based on aluminium construction profiles and fastening techniques that are tailored to a whole range of application scenarios in terms of their function and design. Its wide portfolio of accessories enables users to create an almost unlimited range of applications – from simple frames and machine enclosures right through to complex handling systems and custom machines.

© item Industrietechnik GmbH 2023